



Dough mixer / Rührmaschine  
R40

## **Dough mixing machine R40**

Total capacity.....1,1 KW

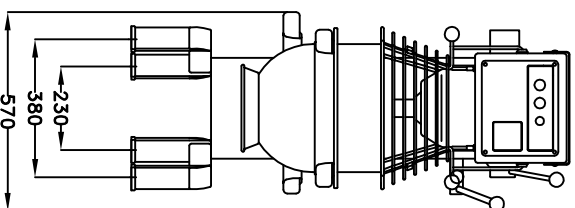
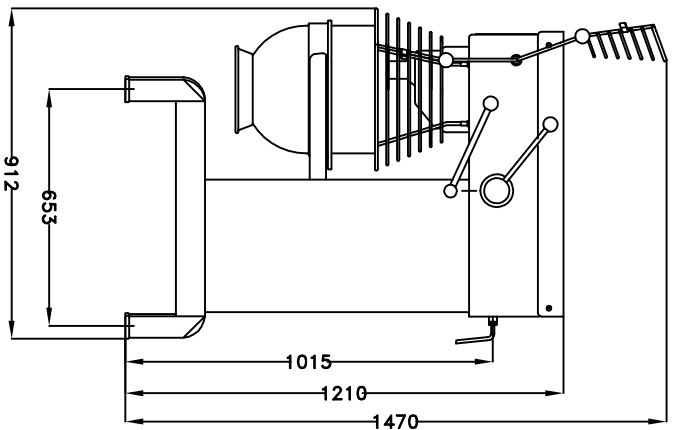
=====

### **Marine Execution**

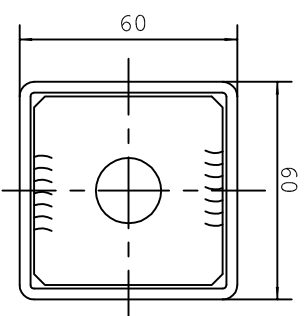
Floor model.

40 liters Stainless Steel bowl with:

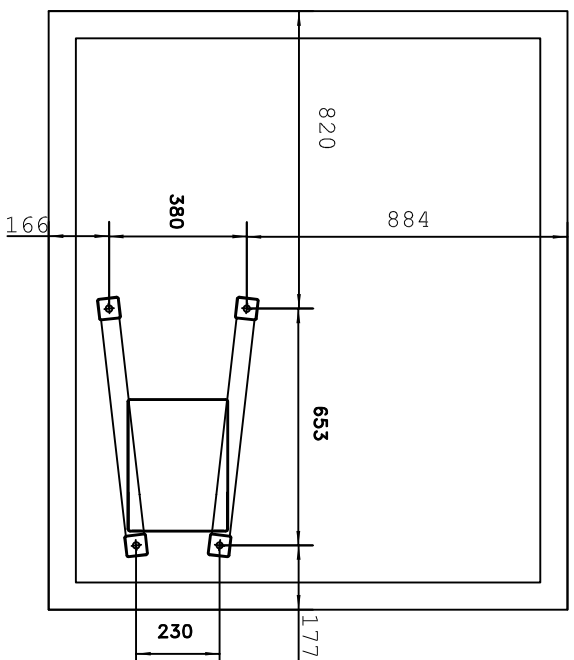
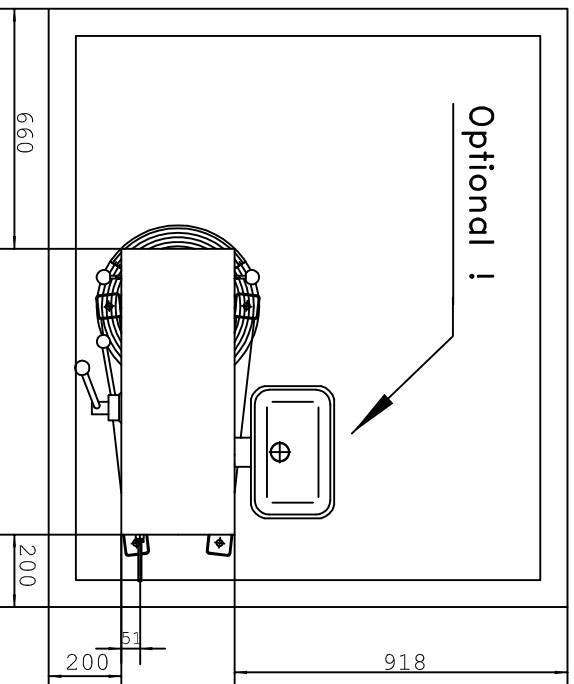
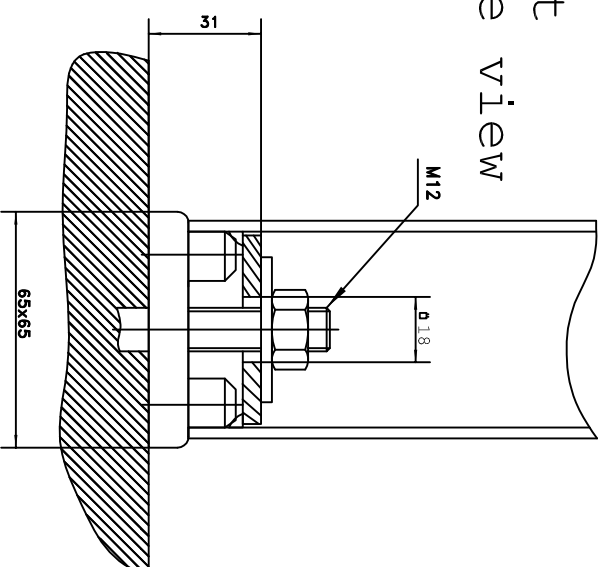
- 1-Beater, 1-Whip, 1-Hook.
- Safety guard for bowl.
- Strong enough as dough kneading machine.
- Heavy construction for use on ships.
- Motor protection, switches and operating lever for stepless speedregulation 0-100% are factory mounted.
- Practically free of maintenance.
- Following positions are included in our scope of delivery:



Foot  
Top view



Foot  
Side view



Optional !

Model R-40

WESCO Navy  
Hamburg

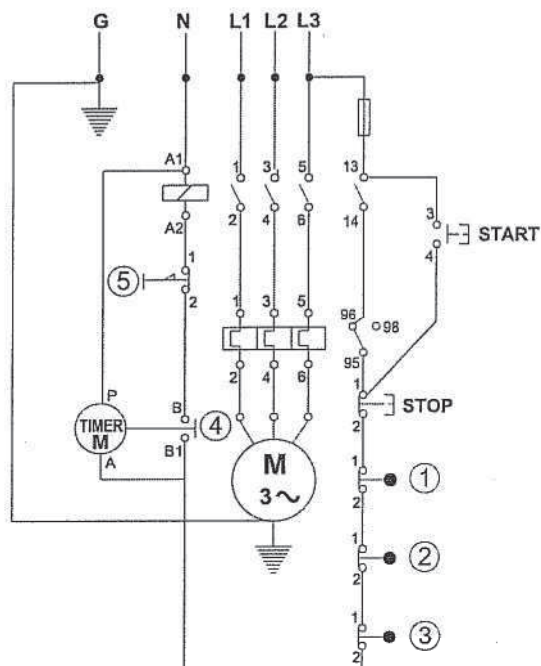
Dough-Mixing-machine  
R-40  
Rühr- und Knetmaschine  
R-40

Tel.: +49 40 600 094 680  
Fax.: +49 40 536 75 01  
E-mail.:  
Info@wesco-navy.de

## ELECTRICAL DIAGRAMMES:

Electrical connection: **3 phase + 0 + ground.**

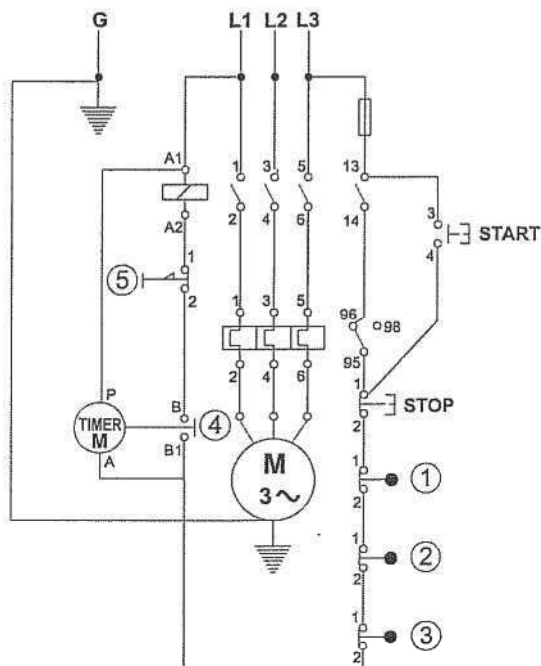
Control voltage to relay: **1 phase + 0.**



**400 Volt 50 Hz 3 Ph**  
**440 Volt 60 Hz 3 Ph without Zero.**

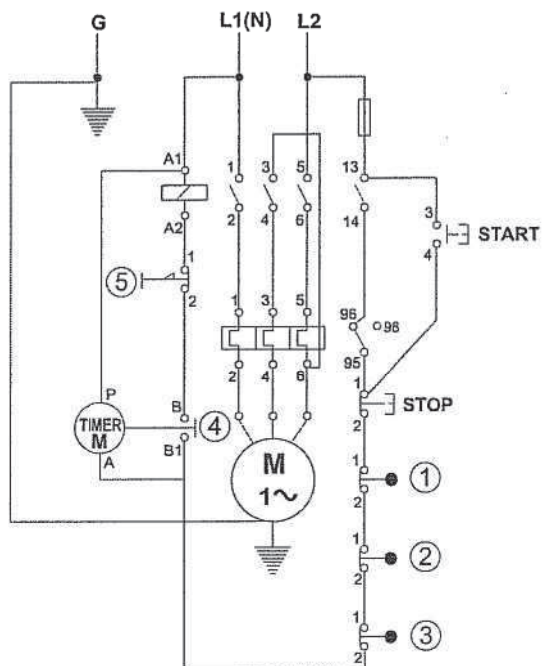
Electrical connection: **3 phase + ground.**

Control voltage to relay: **2 phases.**



Electrical connection: **1 phase + 0 + ground, or  
 2 phases + ground**

Control voltage to relay: **1 phase + 0, or 2 phases**



- (1) Safety switch for bowl lift
- (2) # Safety switch for safety guard.
- (3) \* Safety switch for lid.
- (4) \* Timer
- (5) \* Emergency stop

- \* Will only be mounted on request
- # Optional outside the EU.

### OBS:

The mixer is to be connected to power via a plug.  
 The plug must be dimensioned for min. 16 A, 230/  
 400V~ IP44

### When connecting:

- 1 phase with 0 + earth, use 3 pole plug
- 2 phases + earth, use 3 pole plug
- 3 phases + earth, use 4 pole plug
- 3 phases with 0 + earth, use 5 pole plug