



Dough mixing machine / Rühr- und Knetmaschine
R30

Tel.: +49 40 600 094 680 E-Mail.: info@wesco-navy.de

Dough mixing machine R30

Total capacity.....1,2 KW

=====

Marine Execution

Floor model.

30 liters Stainless Steel bowl with:

- 1-Beater, 1-Whip, 1-Hook.
- Safety guard for bowl.
- Strong enough as dough kneading machine.
- Heavy construction for use on ships.
- Motor protection, switches and operating lever for stepless speedregulation 0-100% are factory mounted.
- Practically free of maintenance.
- Following positions are included in our scope of delivery:

Meaat mincer 70 mm

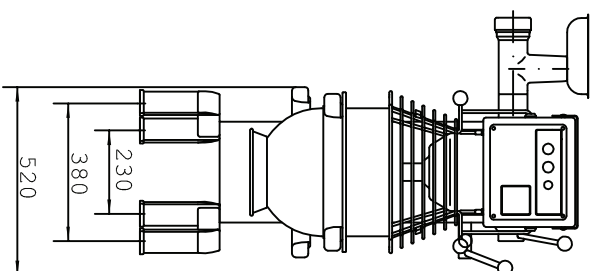
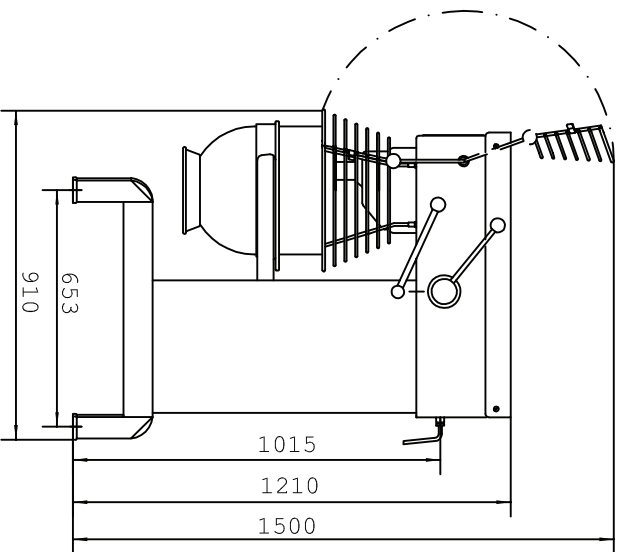
Capacity : 150 Kg/h

- Complete with Bajonet-Connection to the mixing- and dough kneading machine.
- With following equipment:
 - a) Meat tray.
 - b) Intermediate bearing
(only with 20l - 80l machines)
 - c) Breaker plate 4,5mm.
 - d) Knife.

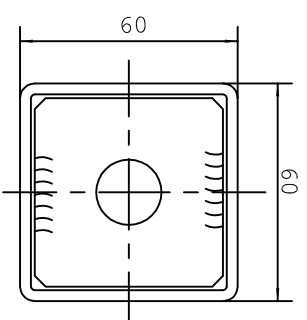
Vegetable cutter

Capacity : 150 Kg/h

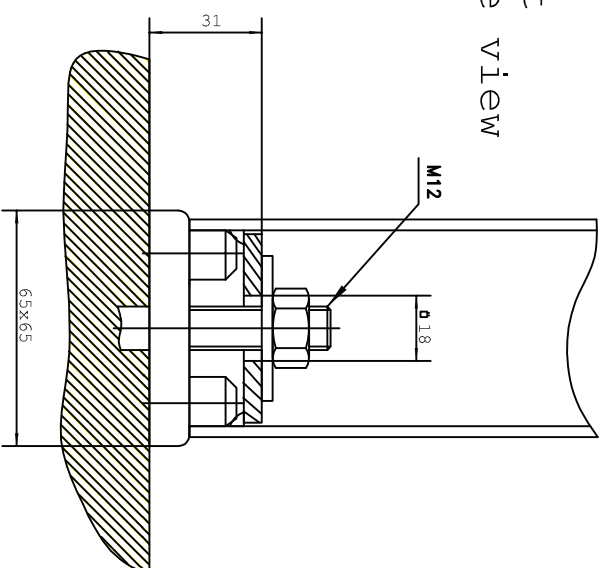
- Complete with Bajonet-Connection to the mixing- and dough kneading machine.
- Complete with the following discs:
 - 1- S3
 - 1- R3



Foot
Top view

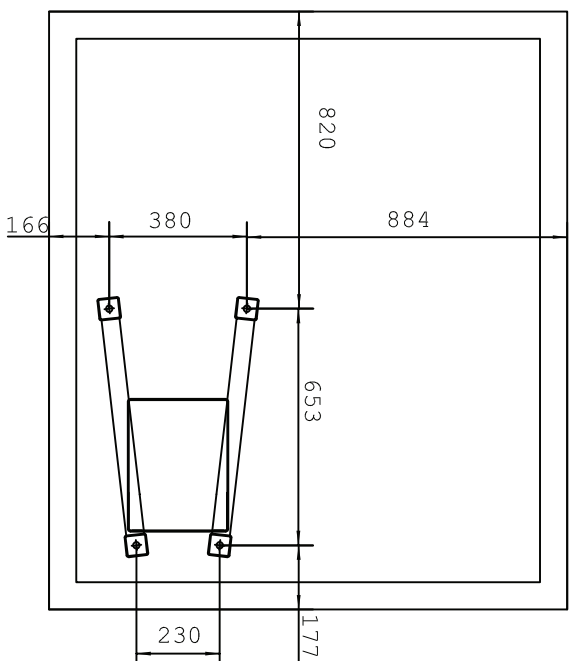
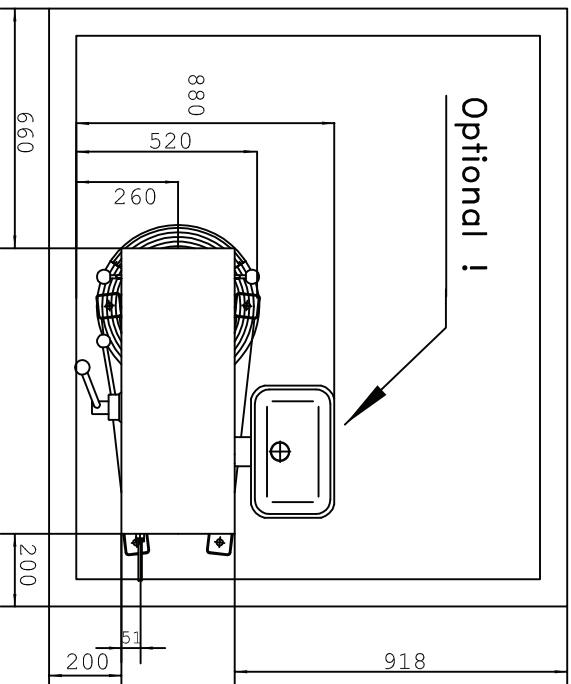


Foot
Side view



Recommended max. free space for handling:
 – Meat mincer
 – Vegetable cutter

Optional !



Model R-30

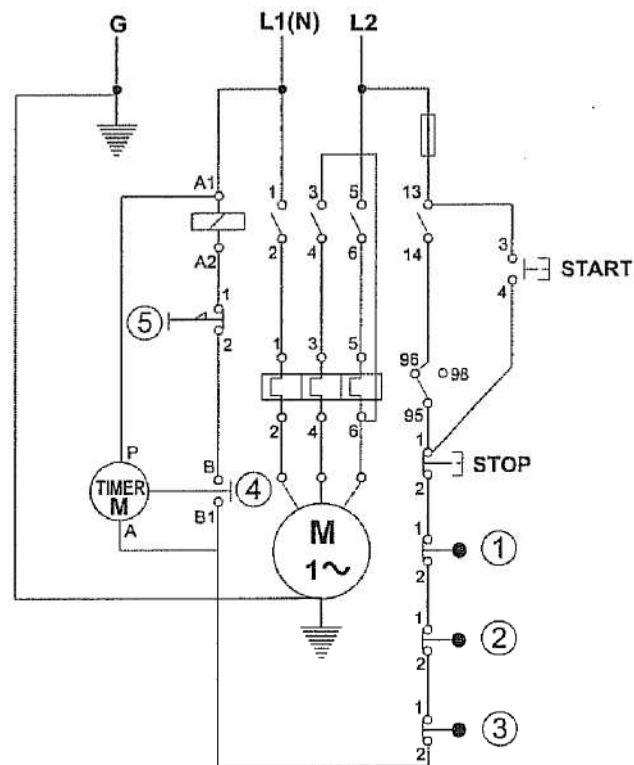
WESCO Navy
Hamburg

Dough-Mixing-machine
R-30
Rühr- und Knetmaschine
R-30

Tel.: +49 40 600 094 680
Fax.: +49 40 536 75 01
E-mail: Info@wesco-navy.de

Electrical connection: **1 phase + 0 + ground, or
2 phases + ground**

Control voltage to relay: 1 phase + 0, or 2 phases



- (1) Safety switch for bowl lift
- (2) # Safety switch for safety guard.
- (3) * Safety switch for lid.
- (4) * Timer
- (5) * Emergency stop

- * Will only be mounted on request
- # Optional outside the EU.

OBS:

The mixer is to be connected to power via a plug.
The plug must be dimensioned for min. 16 A, 230/
400V~, IP44

When connecting;

- 1 phase with 0 + earth, use 3 pole plug
- 2 phases + earth, use 3 pole plug
- 3 phases + earth, use 4 pole plug
- 3 phases with 0 + earth, use 5 pole plug