



Peeling machine / Schälmaschine  
MF15

Tel.: +49 40 600 094 680 E-Mail.: [info@wesco-navy.de](mailto:info@wesco-navy.de)

## **Potato peeler MF15**

Total capacity.....0,37 KW

=====

### **Marine Execution**

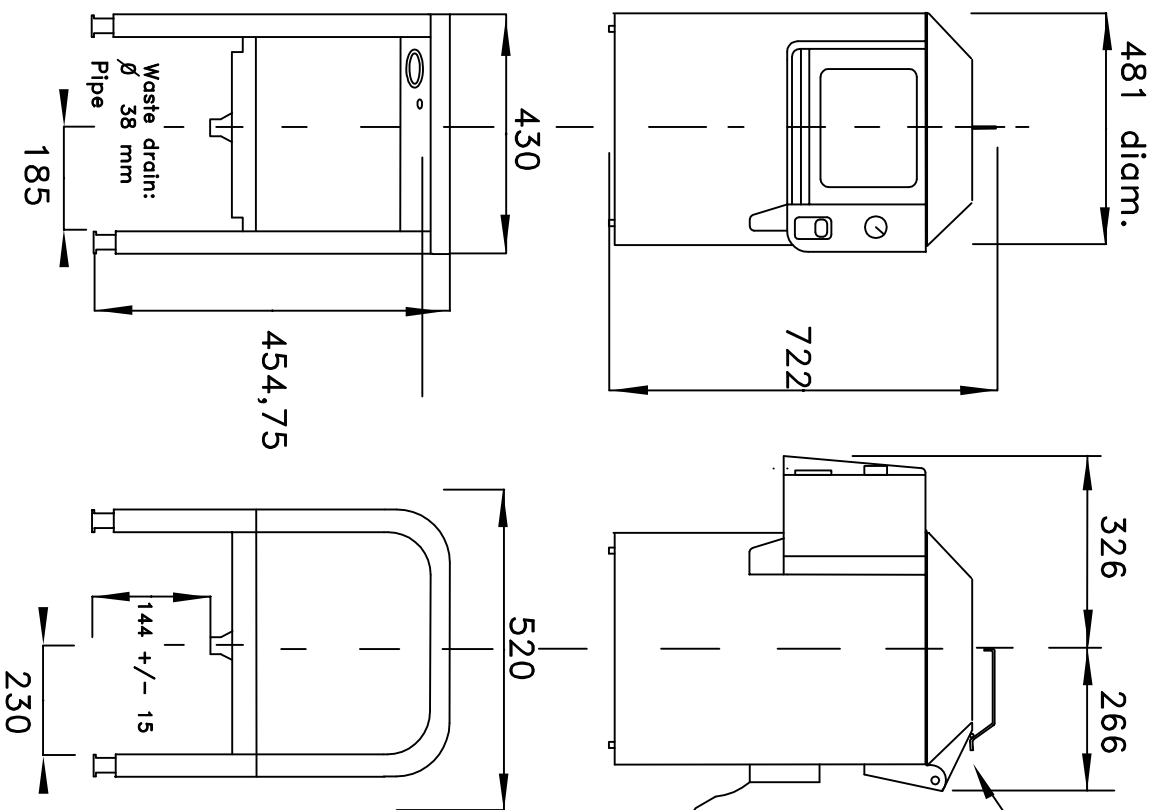
Capacity : 150 Kg/h

Power : 0,37 kW

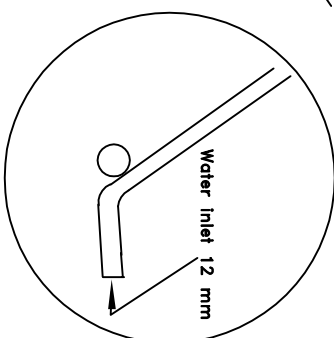
Water inlet : ½"

Water drain : 38 diam.

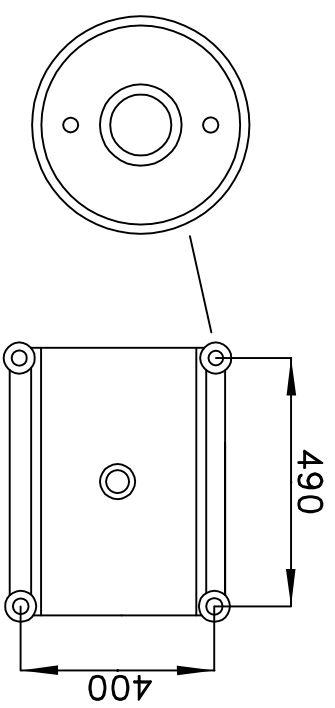
- Floor Model with stand.
- Stainless steel construction.
- Bottom plate and cylinder are carborundum coated for long life resin bonded abrasive.
- Safety lid and inner door.
- Filter basket.
- Timer build in.
- Other peeling plates for vegetable preparation available!
- Practically free of maintenance.
- Complete and ready for installation.



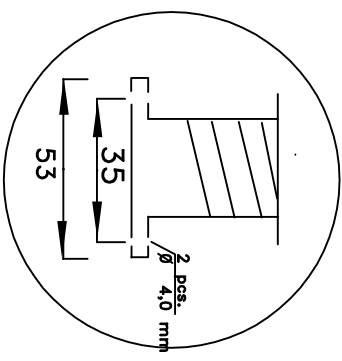
Water inlet in stainless steel, 12 mm diam. It is not threaded. The flexible hose can be moved over the tube and clamped.



Footprint of the stand



Power-supply



Wir behalten uns vor, die technischen Spezifikationen im Interesse der Weiterentwicklung zu verändern.  
We reserve the right to modify the specifications if necessary.

ITEM:		DRAW.	
Potato peeler	MF 15	KO	13.09.11
Kartoffelschäler		REV.	-
THIS DRAWING REMAINS THE PROPERTY OF WESCO Navy		DRAWING NR.	
Tel.: +49 40 600 094 680 Fax.: +49 40 536 75 01		PLOT OUT OF SCALE	
E-mail.: Info@wesco-navy.de			

WIRING DIAGRAM

