



Galley range / Schiffsherd
IPGRB888O

Tel.: +49 40 600 094 680 E-Mail.: info@wesco-navy.de

Galley range IPGRB8880

6-Hot plates. Each 2,6 KW.....15,6 KW

1-Baking oven.430x380x320mm.....3,5 KW

Total capacity:.....19,1 KW

=====

Marine Execution

CONSTRUCTION.

Freestanding on 4 stainless steel feet, adjustable in the height.

Made of stainless steel:

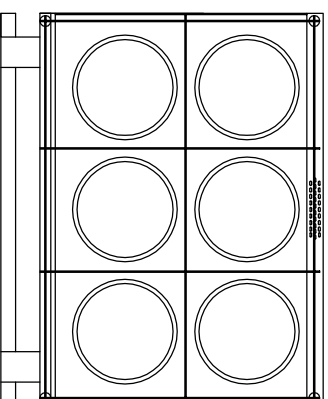
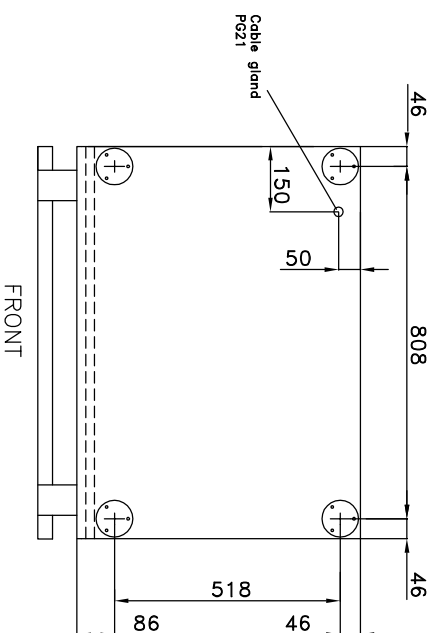
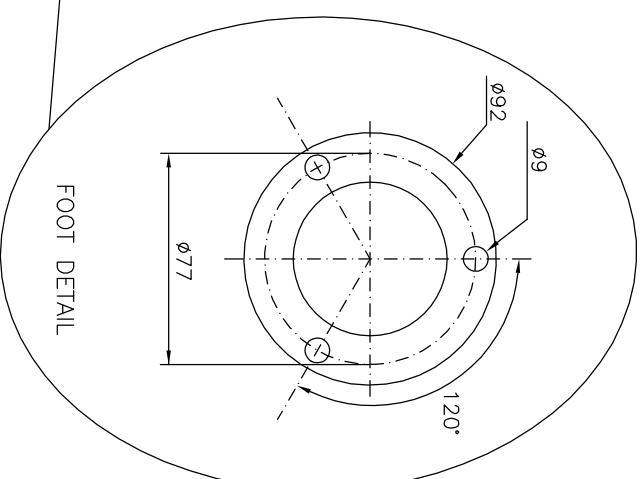
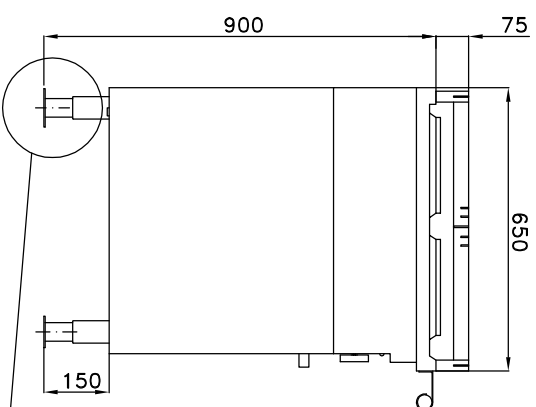
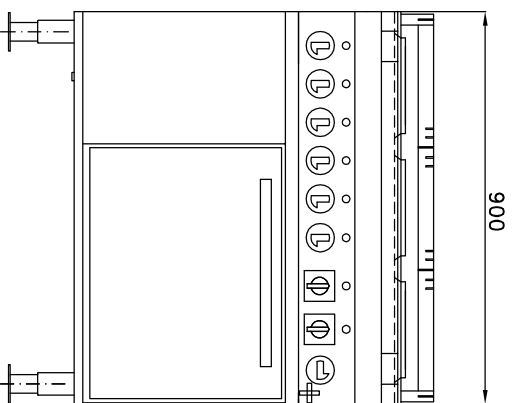
- Outside lining.
- Oven chamber.
- Hand rails.
- Removable storm rails.

FACTORY MOUNTED.

- Delta-Star switches, Thermostats, Pilot lamps and Door Handle.
- Hand rail on the front side.
- Hand rails on the sides and back on request.

INCLUDED IN OUR DELIVERY.

- 1x Roasting grid.
- 1x Cable 1,5m without plug.



Wir behalten uns vor, die technischen Spezifikationen im Interesse der Weiterentwicklung zu verändern.
We reserve the right to modify the specifications if necessary.

PLOT OUT OF SCALE

ITEM:		DRAW.	
Galley range		AW	
IPGRB8880		17.02.12	
Schiffsherd		REV.	
THIS DRAWING REMAINS THE PROPERTY OF WESCO Navy		-	
Tel.: +49 40 600 094 680 Fax.: +49 40 536 75 01		-	
E-mail.: Info@wesco-navy.de		WESCO Navy	
		Hamburg	

Wiring diagramme

GRB8880

