



Food waste compactor / Abfallpresse  
IP500

Tel.: +49 40 600 094 680 E-Mail.: [info@wesco-navy.de](mailto:info@wesco-navy.de)

## **Food waste compactor IP500**

Total capacity.....0,75 KW

=====

### **Marine Execution**

Bag volume : ca.110 ltrs.compressed

Compressed bag : ca. 500x500x430mm

Weight bag : ca. 25-30kg

Power : Hydraulic. Silent.

Pressure operat. : 4500 kg

Cycle time : 23 sec.

- Outside lining of stainless steel.

- The pressure is only on the rack.

No pressure on the deck.

- Safety switch for trolley and  
throw in flap.

- Throw in via throw in flap or  
directly into the trolley

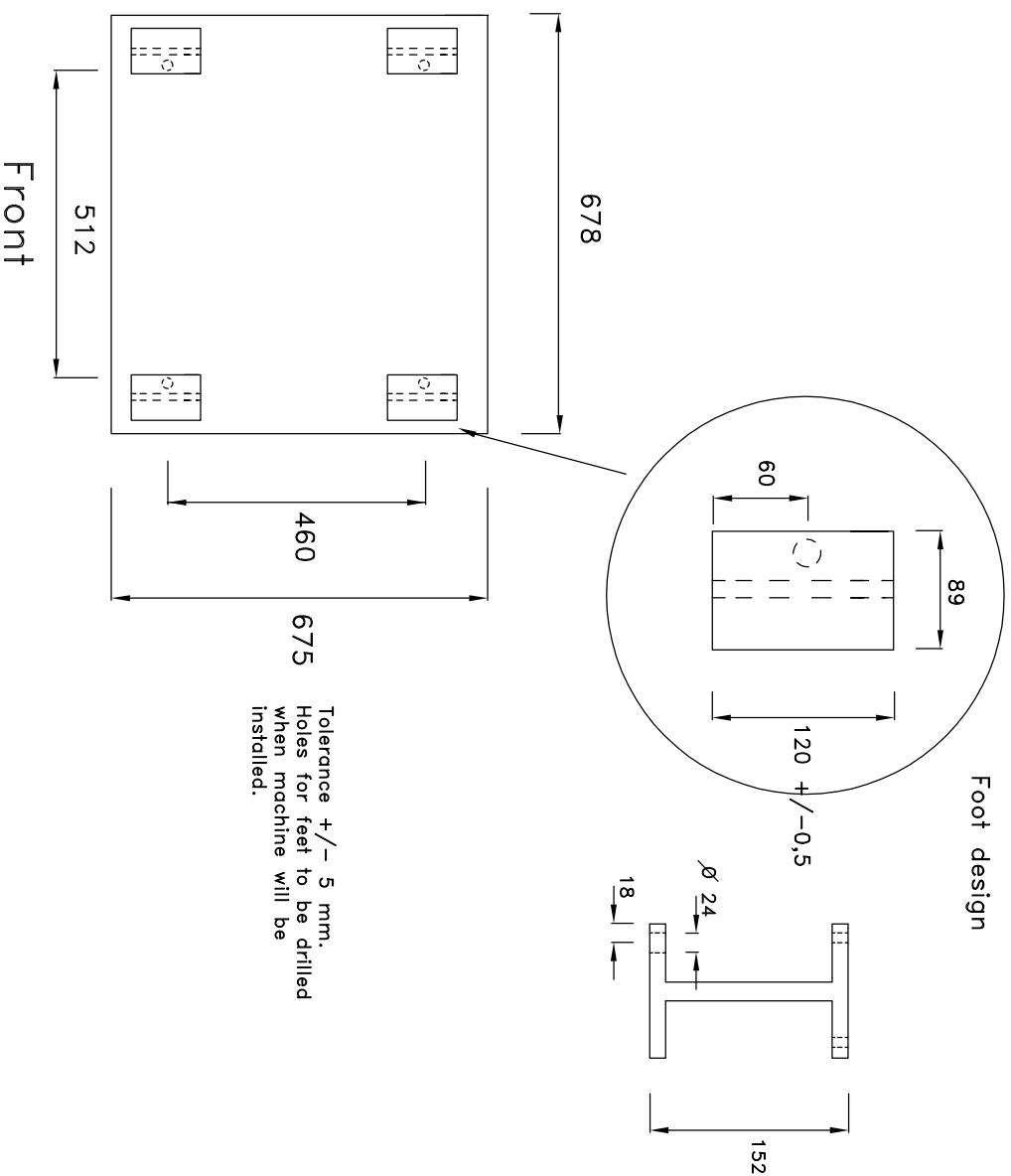
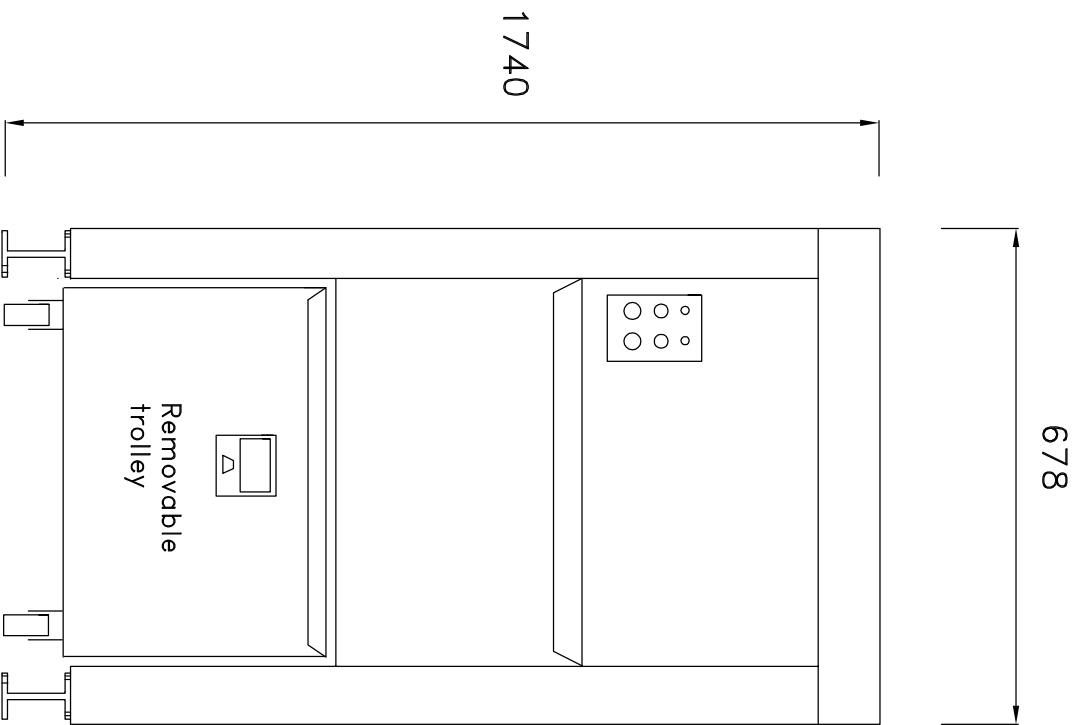
- CE-Sign.

- 2,5 m. cable with plug.

- Equipment:

100 Plastic bags with wire tires.

1 Strapping tool

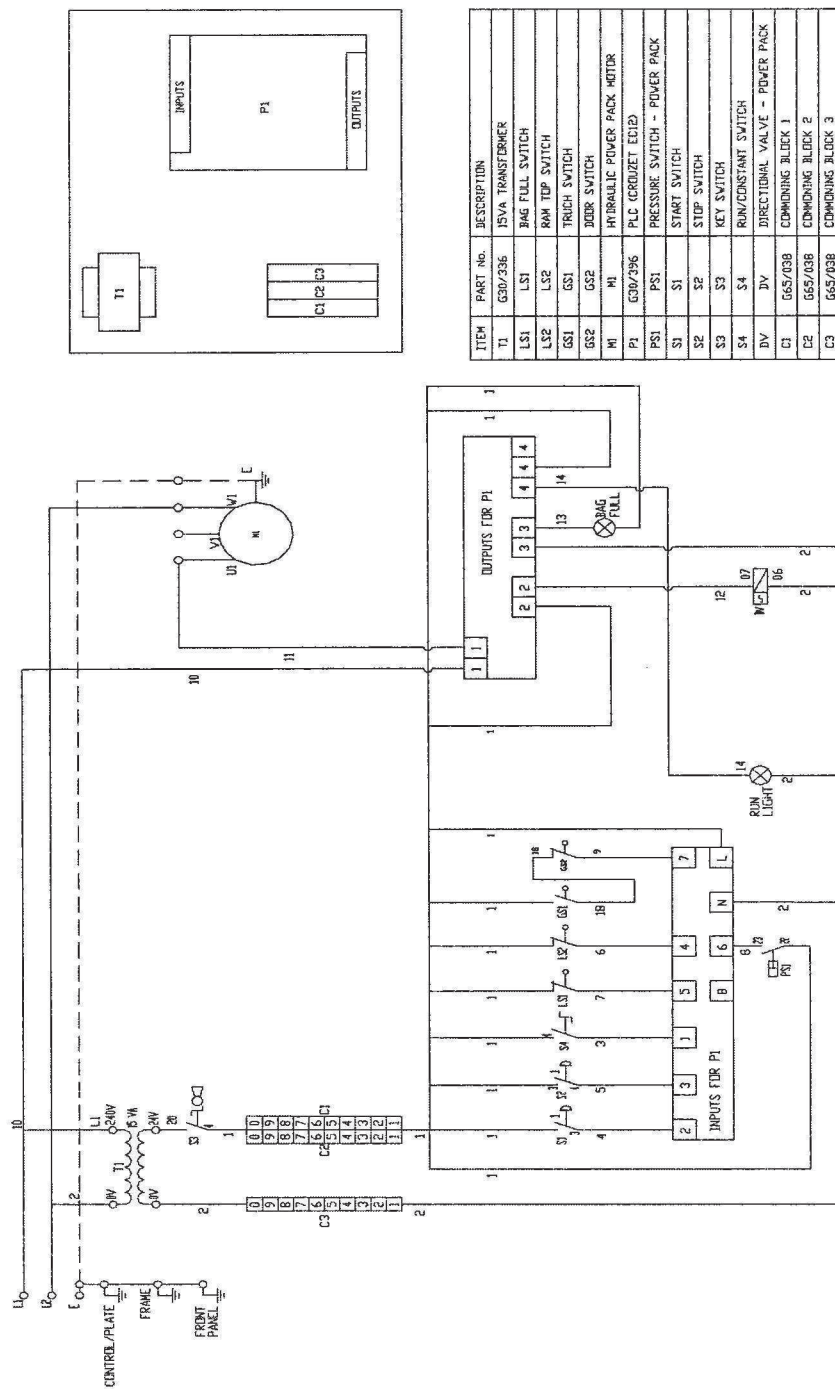


Tolerance  $\pm 5$  mm.  
Holes for feet to be drilled  
when machine will be  
installed.

Wir behalten uns vor, die technischen Spezifikationen im  
Interesse der Weiterentwicklung zu verändern.  
We reserve the right to modify the specifications  
if necessary.

Compactor IP 500		SCALE		FORMAT		DRAW.	
Kompaktor		THIS DRAWING REMAINS THE PROPERTY OF WESCO Navy		A3		AW	
Tel.: +49 40 600 094 680 Fax.: +49 40 536 75 01		REV.		-		18.09.13	
E-mail.: info@wesco-navy.de				-			
WESCO Navy							
Hamburg							

**Wiring Diagram –  
400, IP500 & IP600  
110 - 240V – 1 phase, 50/60Hz  
Fig. 1**



ITEM	PART NO.	DESCRIPTION
T1	G30/336	15VA TRANSFORMER
LS1	LS1	BAG FULL SWITCH
LS2	LS2	RAW TOP SWITCH
LS3	LS3	TRICH SWITCH
LS4	LS4	DOOR SWITCH
LS5	LS5	HYDRAULIC POWER PACK MOTOR
LS6	LS6	PLC (GROUZE) EDI2
LS7	LS7	PRESSURE SWITCH - POWER PACK
LS8	LS8	START SWITCH
LS9	LS9	STOP SWITCH
LS10	LS10	KEY SWITCH
LS11	LS11	RUN/CONSTANT SWITCH
LS12	LS12	DIRECTIONAL VALVE - POWER PACK
LS13	LS13	COMMONING BLOCK 1
LS14	LS14	COMMONING BLOCK 2
LS15	LS15	COMMONING BLOCK 3