



Food waste compactor / Abfallpresse  
IP400

Tel.: +49 40 600 094 680 E-Mail.: [info@wesco-navy.de](mailto:info@wesco-navy.de)

## **Food waste compactor IP400**

Total capacity..... 0,75 KW

=====

### **Marine Execution**

Bag volume : ca.55 ltrs.compressed

Compressed bag : ca. 400x400x400mm

Weight bag : ca. 25-30kg

Power : Hydraulic. Silent.

Pressure operat. : 3000 kg

Cycle time : 14 sec.

- Outside lining of stainless steel.

- The pressure is only on the rack.

No pressure on the deck.

- Safety switch for trolley and  
throw in flap.

- Throw in via throw in flap or  
directly into the trolley.

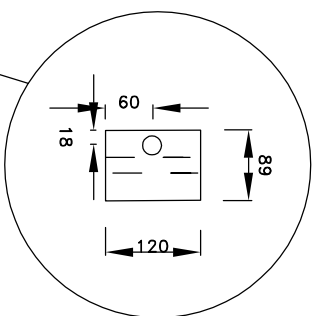
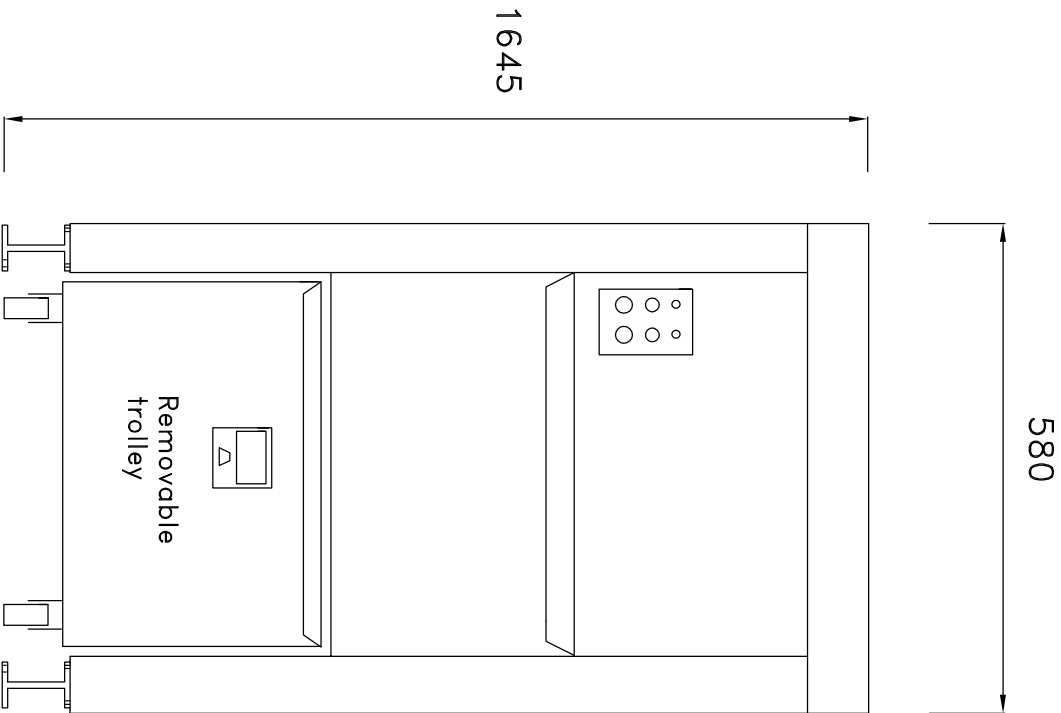
- CE-Sign.

- 2,5 m. cable with plug.

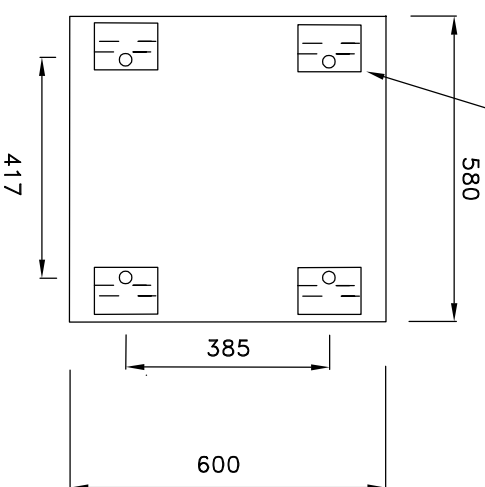
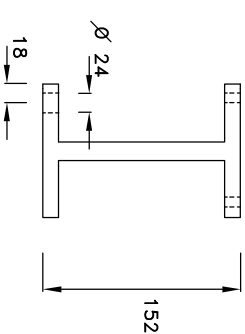
- Equipment:

100 Plastic bags with wire tires.

1 Strapping tool



Foot design



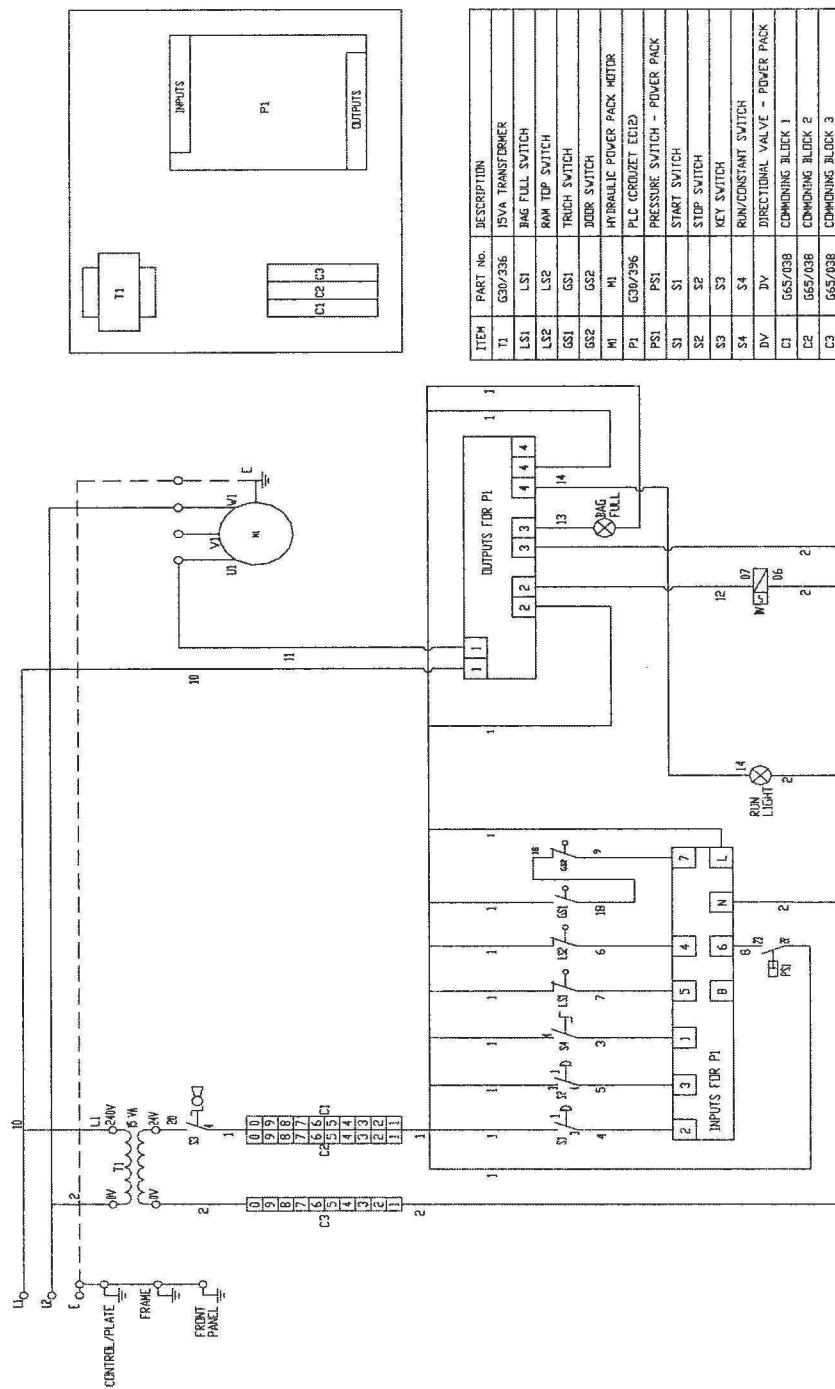
Front

Tolerance  $\pm 5$  mm.  
Holes for feet to be drilled  
when machine will be  
installed.

Wir behalten uns vor, die technischen Spezifikationen im  
Interesse der Weiterentwicklung zu verändern.  
We reserve the right to modify the specifications  
if necessary.

Compactor		SCALE		FORMAT		DRAW.		AW		18.09.13	
IP 400		THIS DRAWING REMAINS THE PROPERTY OF WESCO Navy		A3		REV.		-		-	
Kompaktor											
Tel.: +49 40 600 094 680		Fax.: +49 40 536 75 01		WESCO Navy Hamburg							
E-mail.: info@wesco-navy.de											

**Wiring Diagram –**  
**400, IP500 & IP600**  
**110 - 240V – 1 phase, 50/60Hz**  
**Fig. 1**



ITEM	PART NO.	DESCRIPTION
T1	G30/336	15VA TRANSFORMER
LS1	LS1	BAG FULL SWITCH
LS2	LS2	RAW TOP SWITCH
LS3	LS3	TRICH SWITCH
GS1	GS1	DOOR SWITCH
GS2	GS2	DOOR SWITCH
M	M	HYDRAULIC POWER PACK MOTOR
P1	G30/396	PLC (GROUPEZ EDIE)
PS1	PS1	PRESSURE SWITCH - POWER PACK
S1	S1	START SWITCH
S2	S2	STOP SWITCH
S3	S3	KEY SWITCH
S4	S4	RUN/CONSTANT SWITCH
DV	DV	DIRECTIONAL VALVE - POWER PACK
C1	G65/038	COMMONING BLOCK 1
C2	G65/038	COMMONING BLOCK 2
C3	G65/038	COMMONING BLOCK 3