



Picture is without gantry and heated lamps

Bain Marie  
HCP3GNGHL

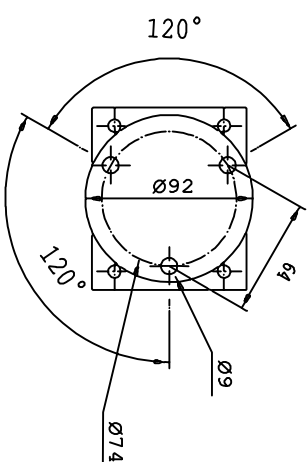
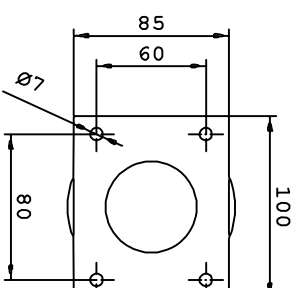
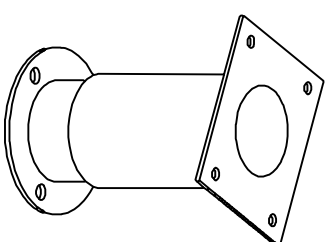
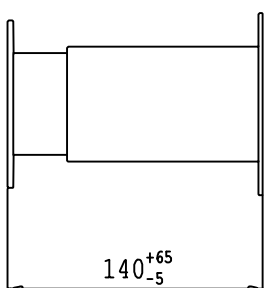
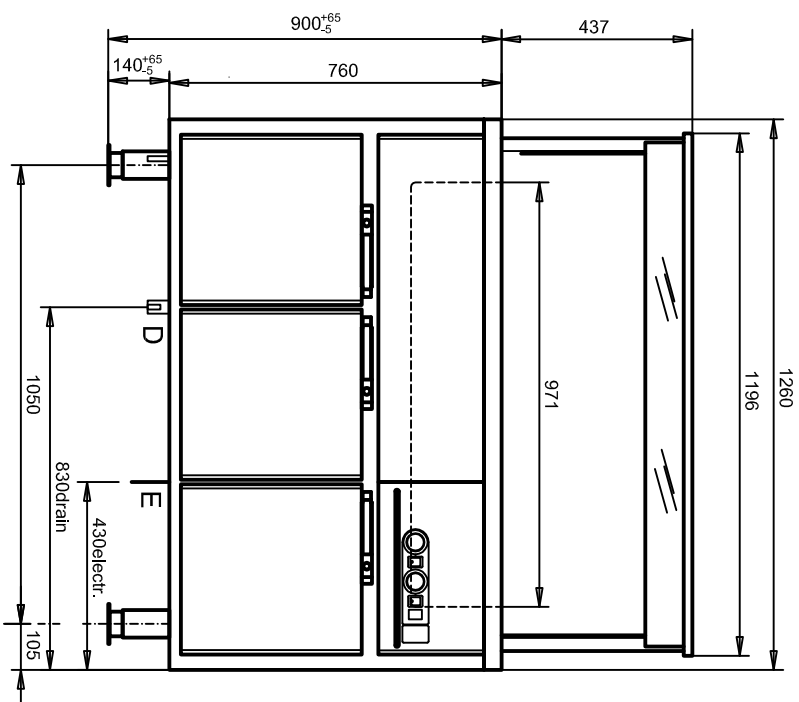
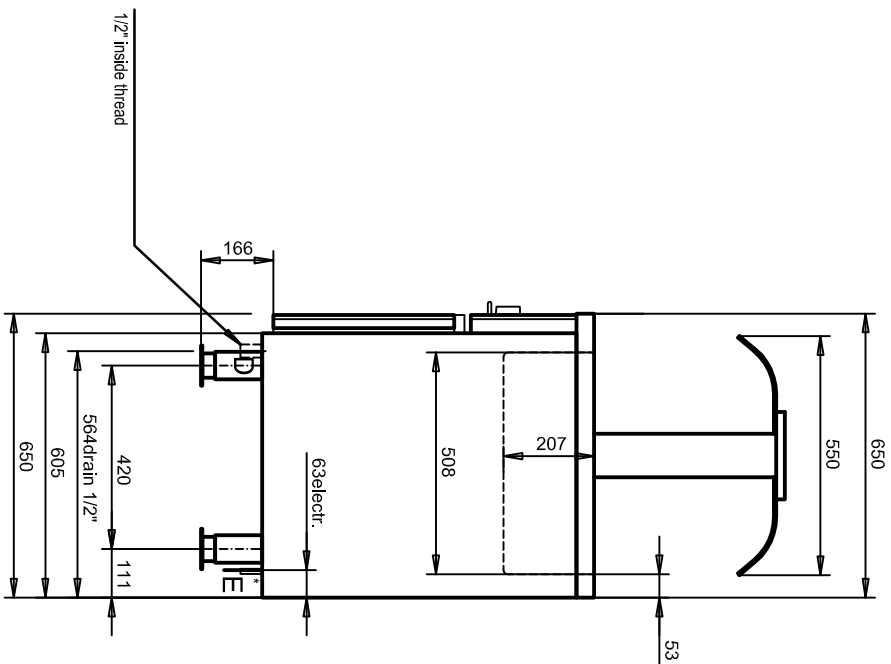
Tel.: +49 40 600 094 680 E-Mail.: [info@wesco-navy.de](mailto:info@wesco-navy.de)

## **Bain Marie HCP3GNGHL**

-----  
Total capacity.....2,95 KW  
=====

### **Marine Execution**

- Bain Marie with space for 3 x GN1/1.
- strong and reliable system.
- Easy to clean.
- Gastronorm sized.
- Seperate thermostats for Bain Marie and hot cupboard (30°C-70°C).
- Made of stainless steel.
- 3 doors.  
Each door has a lockable handle.
- Adjustable feet.
- With gantry and heating lamps

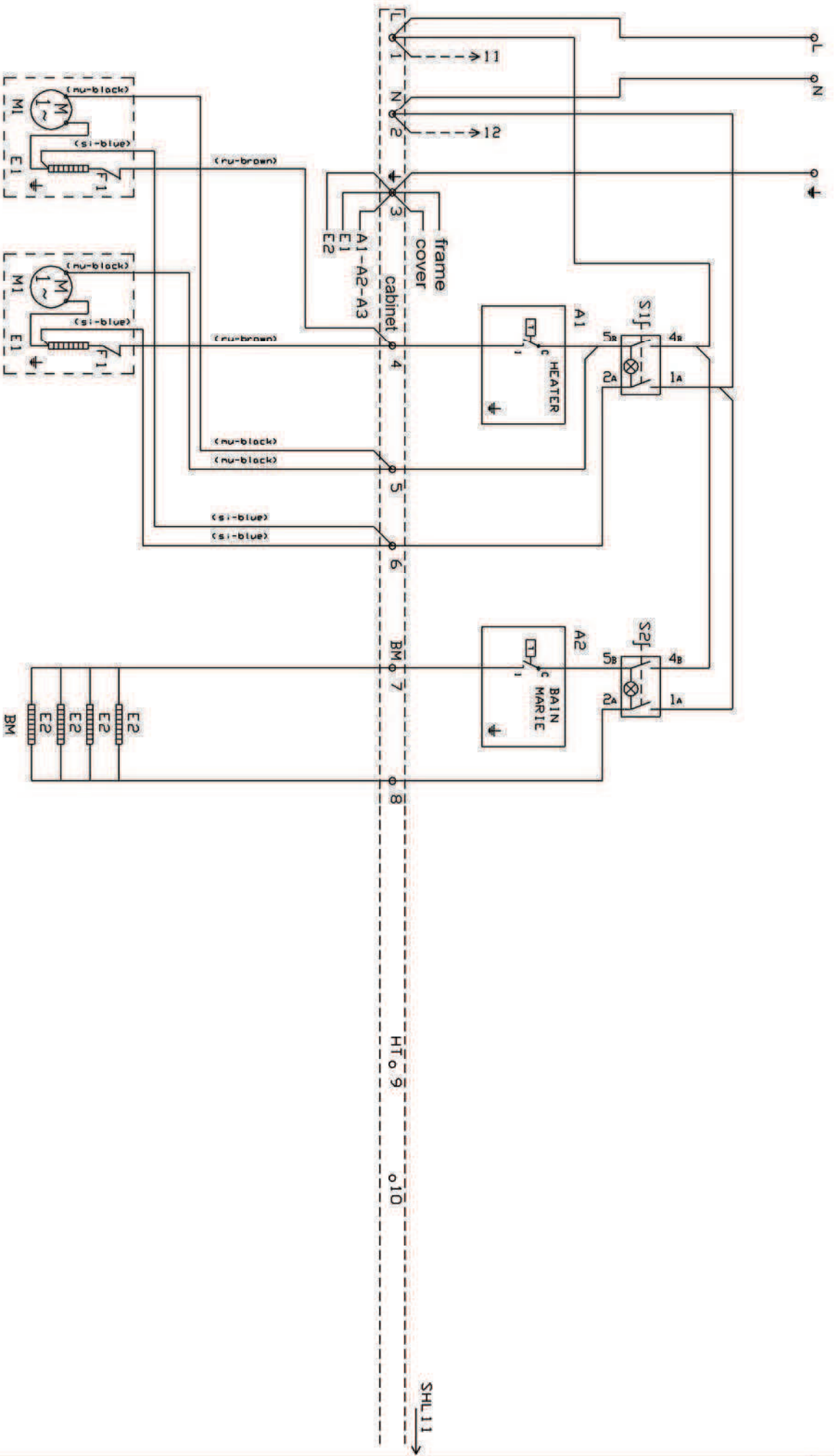


# PILOT OUT OF SCALE

Wir behalten uns vor, die technischen Spezifikationen in Interesse der Weiterentwicklung zu verändern. We reserve the right to modify the specifications if necessary.

E = ELECTRICAL SUPPLY (VOLT)  
D = DRAINAGE FOR BAIN MARIE, 1/2" INSIDE THREAD

ITB	Bain Marie w. Hot Cupboard +	230513	AW
Sneeze guard	HCP3GNCHL	THIS DRAWING REMAINS THE PROPERTY OF	
		WESCO Navy	
Tel: +49 40 600 094 680	Fax: +49 40 536 75 01		
E-mail: info@wesco-navy.de			



A1	Thermostat	
A2	Thermostat	
S1	control switch	
S2	control switch	
M1	fan motor	2x11W
E1	Power Bain Marie	2x300V
E2	Power Hot cupboard	4x550V
F1	Thermoswitch	