



Food waste disposer
FWDDN530MC

Tel.: +49 40 600 094 680 E-Mail.: info@wesco-navy.de

Food waste disposer FWDDN530MC

Total capacity.....2,2 KW
=====

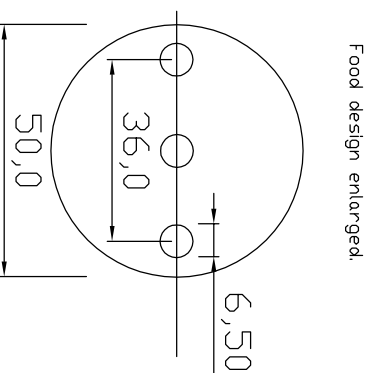
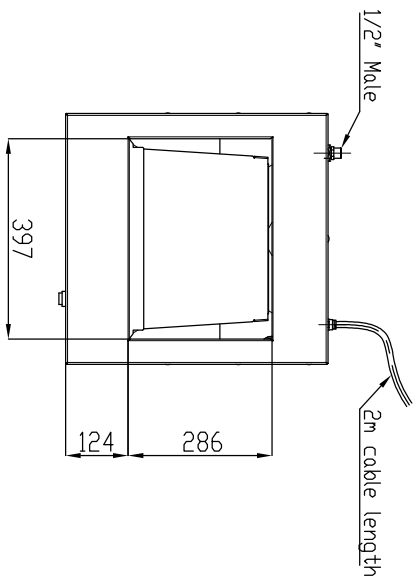
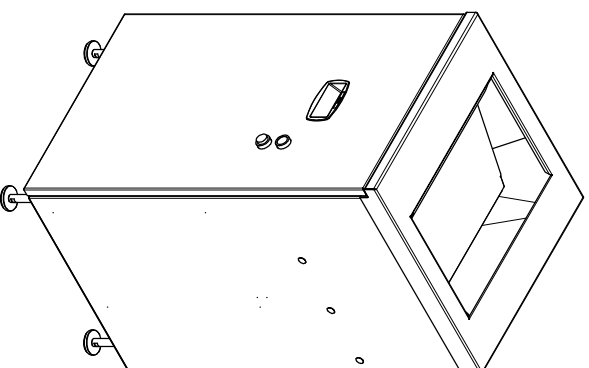
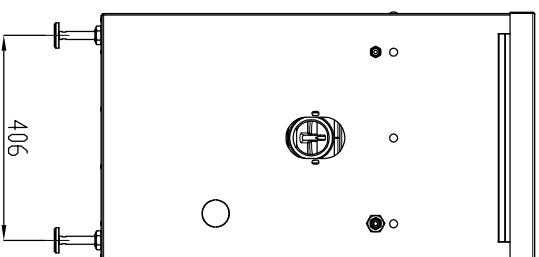
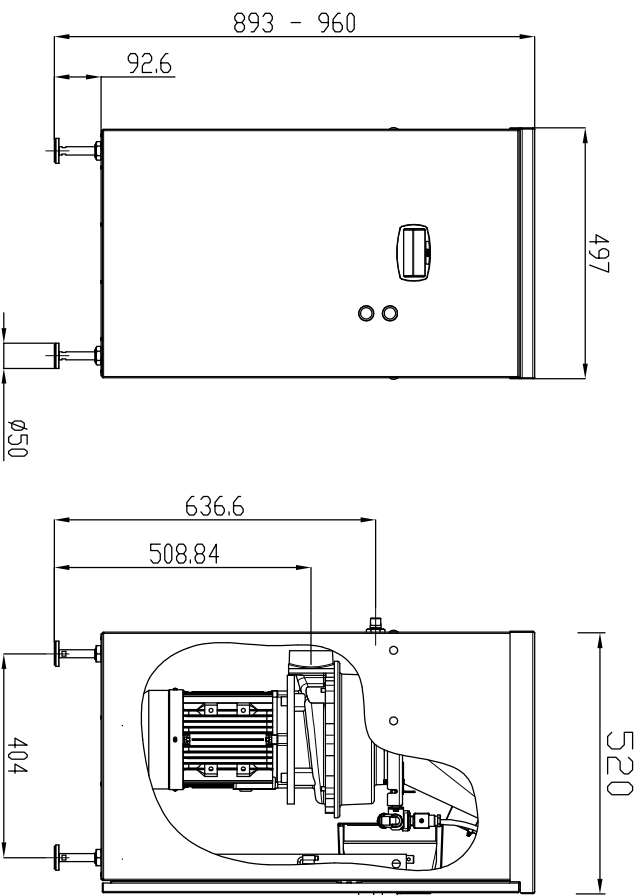
Marine Execution

Motor : 2,2 kW

Capacity : 700 Kg/h

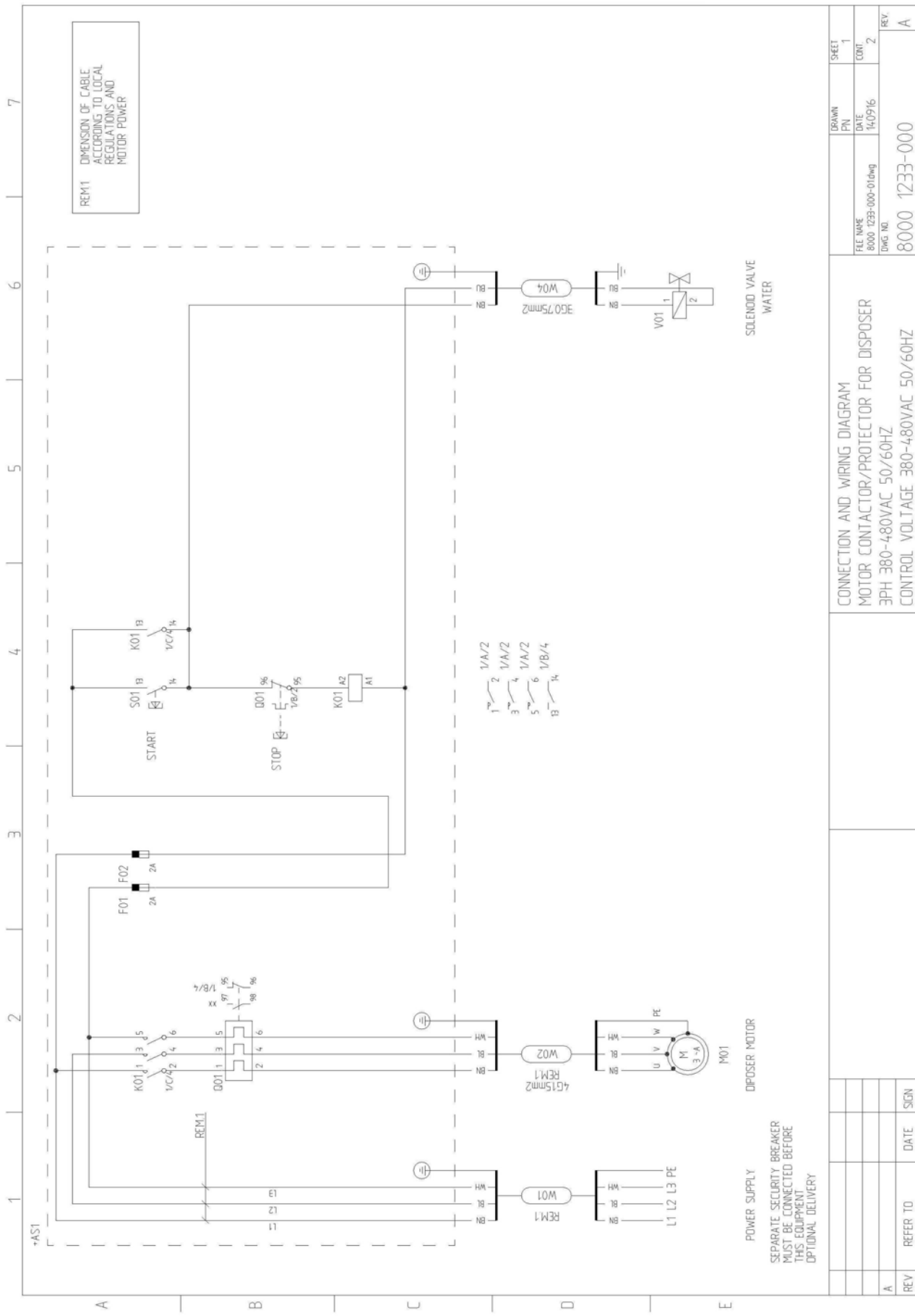
Stand-alone-model.

- Heavy duty, free-standing disposer.
- Made for continuous feeding with food waste.
- Outlet can be positioned to suit existing drain installation.
- Delivered ready for installation to existing drain pipe and power.
- Compliant with MARPOL 73/78 Annex V for disposal of ground food waste.



Wir behalten uns vor, die technischen Spezifikationen im Interesse der Weiterentwicklung zu verändern.
We reserve the right to modify the specifications if necessary.

ITEM: Food waste disposer FWDDN530MC Speisestevenrichter	THIS DRAWING REMAINS THE PROPERTY OF WESCD Navy	DRAW. AW 02.10.17
Tel.: +49 40 600 094 680 Fax: +49 40 536 75 01 E-mail: Info@wesco-navy.de	DRAWING INC. PLOT OUT OF SCALE	

[illegible]

Installation description for disperator to existing assembly, or to assembly manufactured by other supplier

1. Included in delivery
2. Assembly
3. Flushing water
4. Water trap and drain pipe
5. Electrical connection
6. Operation instruction and final testing

1. Included in delivery

Documentation

- Product leaflet(s) including photos, dimensioned drawings and article descriptions for the delivered equipment as per the delivery note.
- Electrical connection and wiring diagram.
- Operation instruction (in plastic).
- Service instruction including exploded view drawing with spare part list and recommendation for service package for preventive maintenance as well as articles subject to wear.

Products

- Disperator of the ordered model and motor voltage as per the delivery note and the product leaflet.
- Complete contactor with motor protector, no voltage release and control coil as per the delivery note.
- Complete solenoid valve ½" BSP, Female with control coil as per the delivery note.
- Line strainer ½" BSP, Female.
- Jam release wrench for freeing rotary grinder if non-grindable object becomes fastened. Please see the operation instruction and the product leaflet.
- 3 pcs. of adjustable legs for all disperator models having a motor power of 2.2 kW or more.

The motor power is specified on the serial number plate of your disperator.

2. Assembly

Please see the enclosed product leaflet(s) for drawings with article descriptions.

Assembly of disperator

Mount the disperator to the existing assembly, or to the assembly supplied by another manufacturer.

* Mounting and support against floor / floor plate

The weight of all disperator models having a motor power under 2.2 kW allows them in most cases **to be hung vertically** under the assembly (e.g. under a sink). To avoid injury before the disperator is fixed with the screws and nuts, these models should be **jacked up to the assembly attachment** by wooden blocks.

Therefore disperator models having a motor power under 2.2 kW have no legs as standard. However, if they are to be placed free standing on the floor / floor plate (e.g. beside a peeling machine / dish washer) these models must be fitted with legs. If these have been ordered for your installation it is noted in the delivery note.

The three legs delivered with disperator models having a motor power of 2.2 kW or more have to be screwed to the bottom of the disperator.

Adjust all the legs of the machine assembly so they give a **proper support** against the floor / floor plate.

Place the 3 mm rubber gasket between the top flange of the disperator and the connection flange of the assembly before bolting together. Tighten the six screws with nuts evenly.

* Fixing of disperator

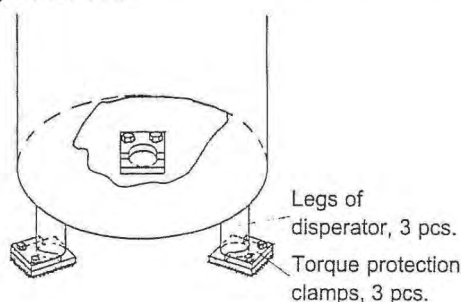
If there is a possibility that the disperator can **rotate** in the assembly, or if it is **free standing** e.g. close to a peeling machine, the disperator must be **fixed with a torque protection bar** fitted to the wall or bulkhead as per the figure below.

When starting or stopping quickly (e.g. if cutlery mistakenly jams the grinding unit) the torque of the motor will cause the disperator to turn.

This may move the drain pipe / water trap from its position causing water leakage. A torque protection bar can be ordered, as an option, from Disperator if not available on installation site. When ordering please specify the distance between wall / bulkhead and suitable fixing screw on the upper disperator flange as per figure below.



If a torque protection bar is not suitable because the distance to the wall / bulkhead is too far, **torque protection clamps** can be fixed around the disposer legs to the floor / floor plate instead as per the figure below.



* Protection cover connected to limit switch

The assembly shall include some kind of **protection cover connected to a limit switch** above the inlet opening to the disposer. When the protection cover is raised the limit switch shall break the control circuit and **the disposer stop**.

The protection cover with switch has not been ordered for this delivery, because you have either decided to manufacture this yourself, or the cover with switch is already previously installed.

3. Flushing water

Connection of the flushing water to the delivered disposer must only be done by an **authorised installer** of water supply and in **accordance to valid local regulations**.

* Water pipe ½"

In order to allow a free flow of water to the disposer, the incoming water pipe (incl. accessories in the piping system such as vacuum valve, cut-off valve etc.) must have the same dimension as the connection to the disposer assembly, i.e. **½" through-out**.

* Line strainer ½" and solenoid valve ½"

The ½" line strainer is connected in the flow direction **before** the ½" solenoid valve in the incoming water pipe. Please note the **flow direction** marked by an arrow on the strainer and the valve, and also note that the strainer shall be fitted with its cleaning screw directed diagonally downward.

* Flushing nozzle or flush pipe with air gap to sink

When a flushing nozzle is fitted in a sink / washing line, position the nozzle as high up as possible and above the spillway. Please refer also to the text below regarding installation of a vacuum valve.

Place the flushing nozzle **as far from the inlet to the disposer as possible**. This will allow a larger flushing area in the bottom of the sink basin.

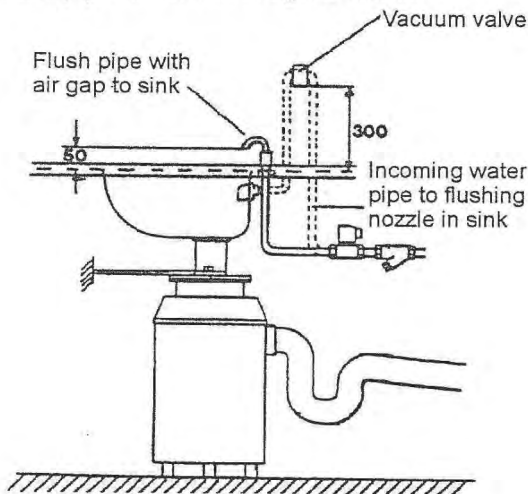
* Reinforced flexible hose ½" for flushing water

A reinforced flexible hose ½" must be fitted between the incoming water pipe mounted on the wall / bulkhead and the connection for flushing water on the disposer assembly. The hose **absorbs the compressive push** in the pipe when the flushing water is turned on, and **absorbs any small vibrations** which may occur during the grinding process of the disposer.

The reinforced flexible hose is not included as standard with the disposer but is available as an option from Disperator. Please specify when ordering the distance between the water connections on the wall / bulkhead and the disposer.

* Vacuum valve ½"

When a flushing nozzle is fitted in a sink / washing line or other type of assembly, a **vacuum valve must be installed** at the top of a lyre-shaped incoming water pipe as shown in figure below.



This figure shows the installation of a vacuum valve above a sink assembly. In your case the assembly used may be of another type (not a sink). The positioning of the vacuum valve is however the same.

This protects the water pipe from re-suction during a possible overflow. The vacuum valve is not included as standard delivery.

When a flush pipe with air gap to sink / washing line or other type of assembly, is fitted, no vacuum valve is needed.

4. Water trap and drain pipe

The drain connection of the delivered disposer must only be made by an **authorised** installer of sewer supply and in **accordance to valid local regulations**.

* Dimensions

The water trap and the drain pipe must have **the same dimension as the outlet flange of the disposer**, (i.e. 2" for all models having a motor power under 2.2 kW, and 2½" for all models having a motor power of 2.2 kW or more) in order to allow free waste water flow from the disposer. Larger dimensions than those given above shall also be avoided as this would reduce the speed of the waste water flowing from the disposer.

* Depth and threshold of water trap

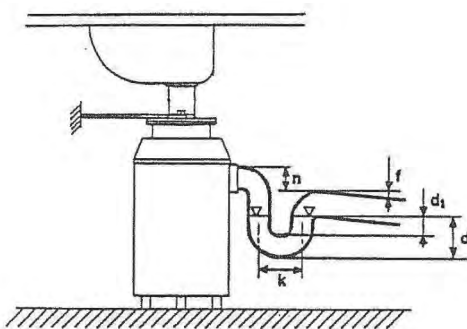
The depth of the water trap (measurement "d" in figure below) shall be **as small as possible** in order to obtain the best possible flow with the largest amounts of food waste. The water trap must also be deep enough so that the **water threshold "d₁" is approximately 50 mm**.

* Curves and bends

The water trap and all bends in the drain pipe must be **drawn without sharp bends and curves** according to local standards. The distance "k" in the figure below for models having a motor power under 2.2 kW should be 100-150 mm and for models having a motor power of 2.2 kW or more the distance "k" should be 150-200 mm.

* Level difference

The level difference (measurement "n" in the figure below) must be **at least equal to the inner drain pipe diameter**, i.e. 2" for disposer models having a motor power under 2.2 kW, and 2 ½" for models having a motor power of 2.2 kW or more.



* Slope of drain pipe

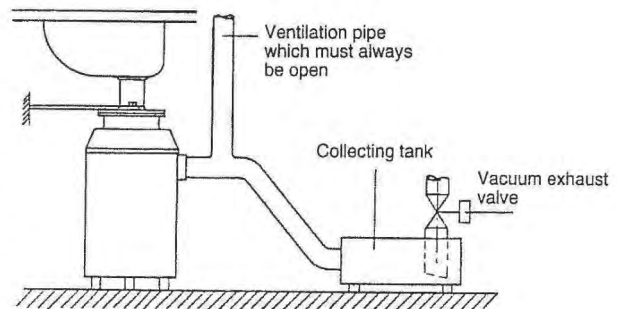
The slope of the drain pipe ("f" in the figure above) must **not be less than 2:100**. When the rate of flow of food waste is large and / or where the distance from the disposer to the floor drain is great, a slope of **not less than 5:100** should be maintained.

Installation of horizontal drain pipes must be avoided at all times.

As an option, water traps are available from Disperator.

* Vacuum Evacuation

In installations where the disposer is evacuated by means of a vacuum, **no water trap** shall be connected to the outlet of the disposer. Instead, the disposer is connected directly to the collection tank of the vacuum system. It is **important** that the drain pipe between the disposer and the collection tank has a **ventilation pipe that is always open** as shown in the figure below. A ventilation pipe must be fitted even if the collecting tank has automatic airing.



5. Electrical connection

The electrical connection of the delivered disposer must only be done by **authorised electrician** and **according to local regulations**.

The electrical connection and wiring to be done is shown on the enclosed diagram. Please note also the following:

* Supply voltage

Check that the supply voltage corresponds to the specified voltage on the disposer serial number plate.

* Mains fuses

Check that the supply voltage for the delivered model is fused as specified in the enclosed product leaflet.

* Line breaker

A separate line breaker shall be connected if it is required by local regulations. The line breaker is not included as standard delivery for the disposer, but can be supplied as an option.

* Cable dimension

Use connection cable having 1.5 mm² wire area for disposers with rated current **up to 10A**. For disposers with rated current **above 10A** use cable having 2.5 mm² wire area.

The rated voltage and current for the disperator is given on the disperator serial number plate.

* Cable protection

All electrical cable must be **protected against damage** by being securely fastened, for example to the assembly frame work and wall / bulkhead.

If there is a risk that the cables can be damaged, for example, by passing trolleys then the cables must be **protected by flexible sleeving or conduit**.

* Earth wire

The earth wire shall be longer than main voltage wires when connecting to the cable terminal block. This gives earthing protection if the voltage wires become insecure in the cable nipple allowing them to be pulled from their terminals.

* The disperator's direction of rotation

The disperator's grinding and pumping operations **function correctly irrespective of the motor's rotational direction**. It is therefore irrelevant in which sequence the electrical phases are connected.

* Control voltage

Check that the control voltage of the contactor and valve, as shown on their coils, **corresponds** to each other, the delivery note and the electrical connection diagram.

* Contactor with motor protector

Check that **the motor protector is adjusted** to the rated current which is specified on the serial number plate of the disperator. The rated current at the voltage to be connected to the delivered disperator model is also given in the enclosed product leaflet.

The motor protector must **never** be adjusted to a greater value than the rated current.

* Placing of contactor & motor protector

For the best possible protection against electrical faults caused by high pressure water flushing, and damage by knocks and bumps, the contactor & motor protector should be placed **within comfortable reach** for kitchen / galley personnel but as **high up** as possible on the wall / bulkhead.

* Cable securing nipples

Cable securing nipples used in the contactor casing must be dimensioned so that they enable the **cable to be sealed and secured tightly**.

When a flexible conduit is used to protect the cable, **remove the flexible conduit through the nipple so securing the cable** to the contactor casing. Water can otherwise leak into the casing through the nipple, especially when the kitchen is flushed clean with high

pressure water. Securing the cable in this manner will make a good fixture.

When cabling is completed, extra sealing in the cable securing nipples using a **rubber sealing compound** around the cable is recommended.

* Contactor casing

Check that the top half of the contactor casing (with protection class IP55) **fits properly and is tightened** in order to seal from damp.

The operation of the start and stop buttons is dependent upon the top half of the contactor casing fitting correctly.

* Limit switch

Check the operation of the limit switch. **The disperator must stop** when the protection cover / cover insert of the assembly is raised.

If necessary, finely adjust the position of the switch and check that it is **properly fixed**.

6. Operation instruction and final testing

Secure the operation instruction (enclosed in plastic) **by screwing** it to the wall / bulkhead in a position where it is easily seen by the operator before starting the disperator.

Check that the rotary shredder in the inlet opening of the disperator turns freely in both directions by hand, and make sure that no foreign object has been dropped into the grinding unit during the installation.

Start the disperator and determine that the rotary shredder revolves and that flushing water flows automatically.

Check assembly, flushing water connections and plumbing connections for possible leaks.

If the disperator fails to operate, please refer to the section on "Trouble shooting" in the instruction for operation.

Instruct the person responsible for the machines in the galley / kitchen about the operation of the disperator before handing over the remaining documentation and the jam release wrench.