



Universal kitchen machine / universelle Küchenmaschine
DMV20

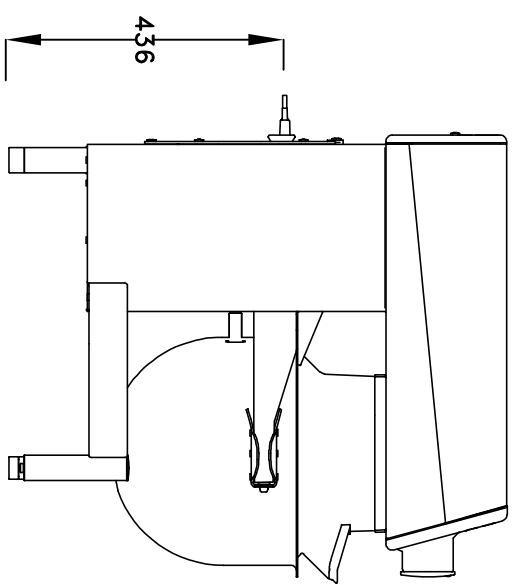
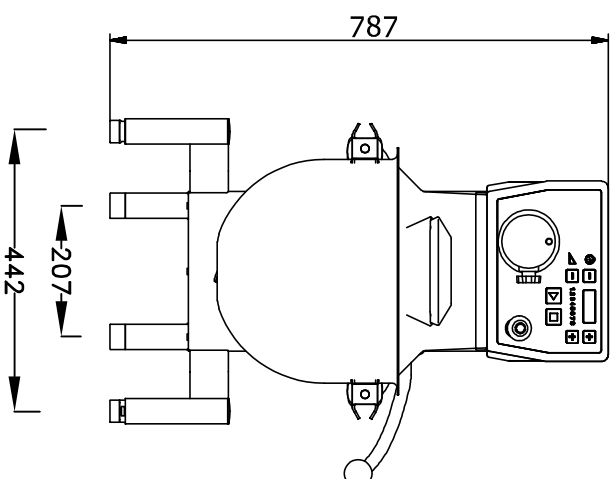
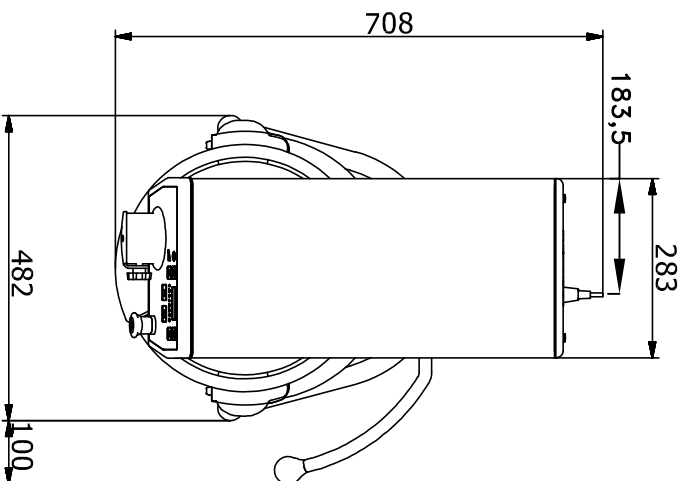
Tel.: +49 40 600 094 680 E-Mail.: info@wesco-navy.de

Universal kitchen machine DMV20

Total capacity.....0,75 KW
=====

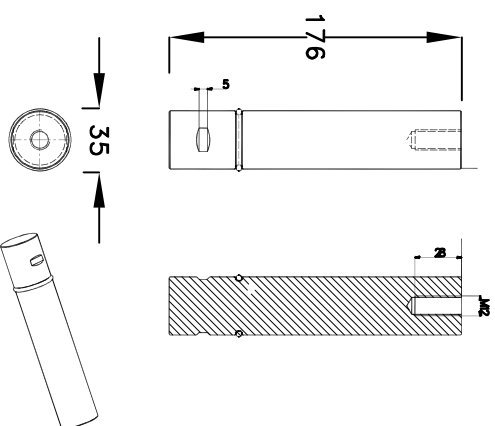
Marine Execution

- Table model without stand.
- Stainless steel housing.
- Capacity:
 - 0,75 kW
 - 20 liters stainless steel bowl.
- Safety guard for bowl.
- Emergency stop.
- IP44!
- Up to 350 rpm.
- Strong enough as dough kneading machine.
- Heavy construction for use on ships.
- Motor protection, switches and control panel for stepless speed regulation 0-100% are factory mounted.
- Practically free of maintenance.
- Accessories:
 - 1- Beater
 - 1- Whip
 - 1- Hook.
- Extra equipment with bayonet connection is included if specified below:

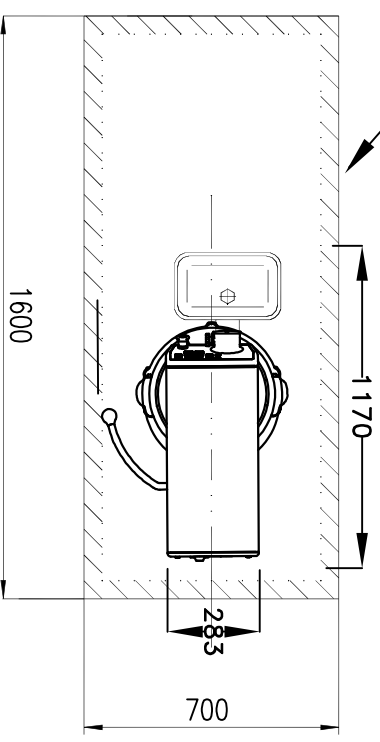


MOUNTING of the machine to ground:

1. Remove standard legs.
2. Mount the 4 stainless steel legs which has come with the machine.
3. Adjust the height and weld the legs to the ground.



Recommended free space for handling of additional equipment such as meat mincer and vegetable cutter.



Dough-Mixing-machine
DMV20 without stand

ddto. 11.08.2018
oprel.

WESCO Navy
Hamburg

Tel.: +49 40 600 094 680
Fax.: +49 40 536 75 01
E-mail: info@wesco-navy.de

rev. 00

