



Combifreezer / Kühl-Gefrierschrank  
CKFA550

Tel.: +49 40 600 094 680 E-Mail.: [info@wesco-navy.de](mailto:info@wesco-navy.de)

## **Combifreezer CKFA550**

Total capacity.....0,5 KW

=====

### **Marine Execution**

Capacity : 0,5 kW

Refrigerant : R-134a

Temperature : -1°C <-> +12°C  
-18°C <-> -25°C.

Door hinged : Right or left.  
Please specify.

-as one unit with 2 doors.

-Two separate compressors.

-Net volume: 270 ltr. Refrigerator.  
270 ltr. Deep freezer.

-Doors hinged: Right- or left.  
(Please specify.)

-2 doors with one lock each.

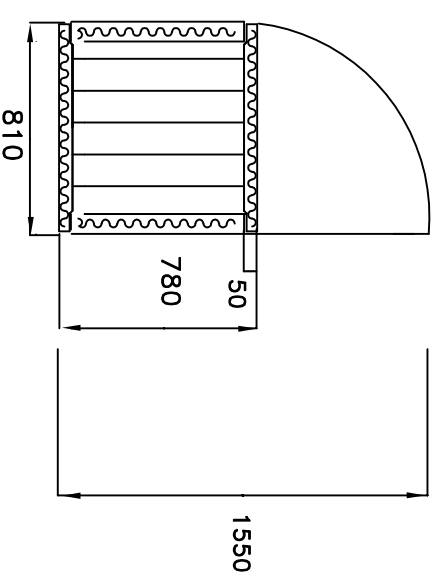
-Free standing for fastening to deck with fee

-Door and front of stainless steel.

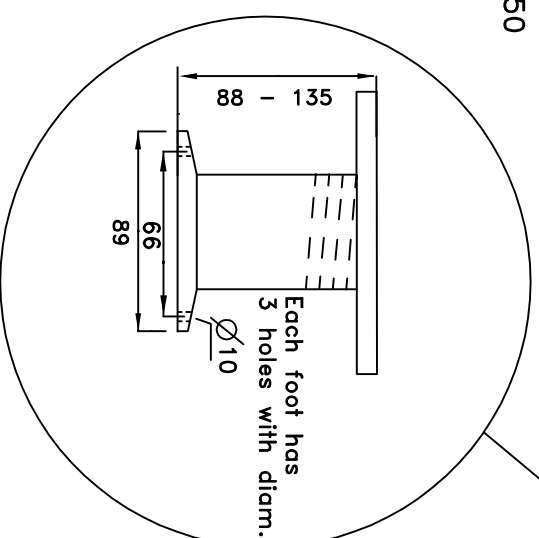
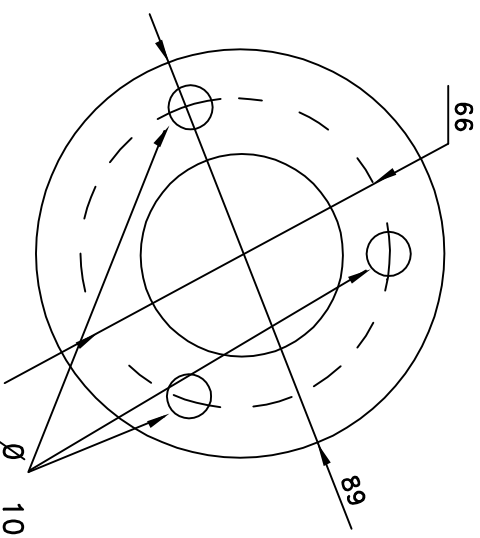
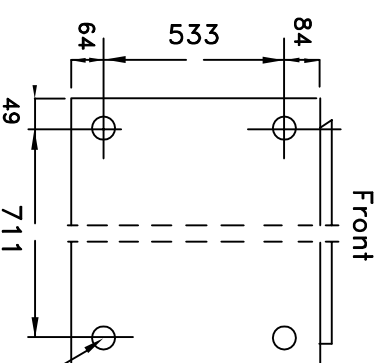
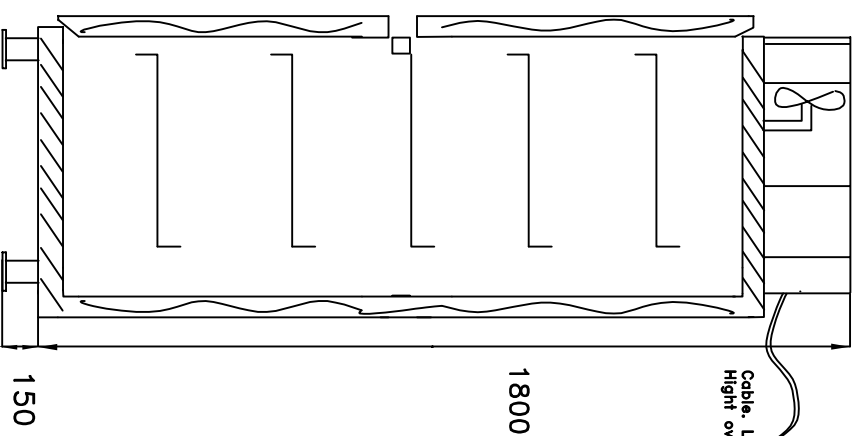
-Both doors have marine lock.

-Complete and ready for use.

# CKFA 550



Cable, Length : 3000  
Hight over ground : appr. 1900



## PLOT OUT OF SCALE

Wir behalten uns vor, die technischen Spezifikationen im Interesse der Weiterentwicklung zu verändern.  
We reserve the right to modify the specifications if necessary.

REF:

Refrigerator with freezer

CKFA 500

Kühlschrank mit Gefriereinheit

THIS DRAWING REMAINS  
THE PROPERTY OF  
WESCO Navy

Tel.: +49 40 600 094 680 Fax.: +49 40 536 75 01

E-mail.: info@wesco-navy.de

## Installation instructions

### Location

- The equipment must be installed in a well-ventilated room (fig. 1), as far as possible from heat sources and so that good air circulation is achieved, in particular around the part where the compressor unit is located. The maximum room temperature may not exceed +32 °C and the condensation temperature may not exceed +45 °C.
- Adjust the height and the horizontal and vertical inclination of the equipment by rotating the adjustable legs and check that the door can be opened and closed without impediment.
- The equipment must be **anchored** in a suitable manner **to prevent it from tipping over**.
- Remove the protective plastic from the external surfaces on models made of stainless sheeting. Pull the plastic off slowly. If, after the plastic has been removed, there is any glue residue, it can be removed with a suitable solvent.

### Electrical connection

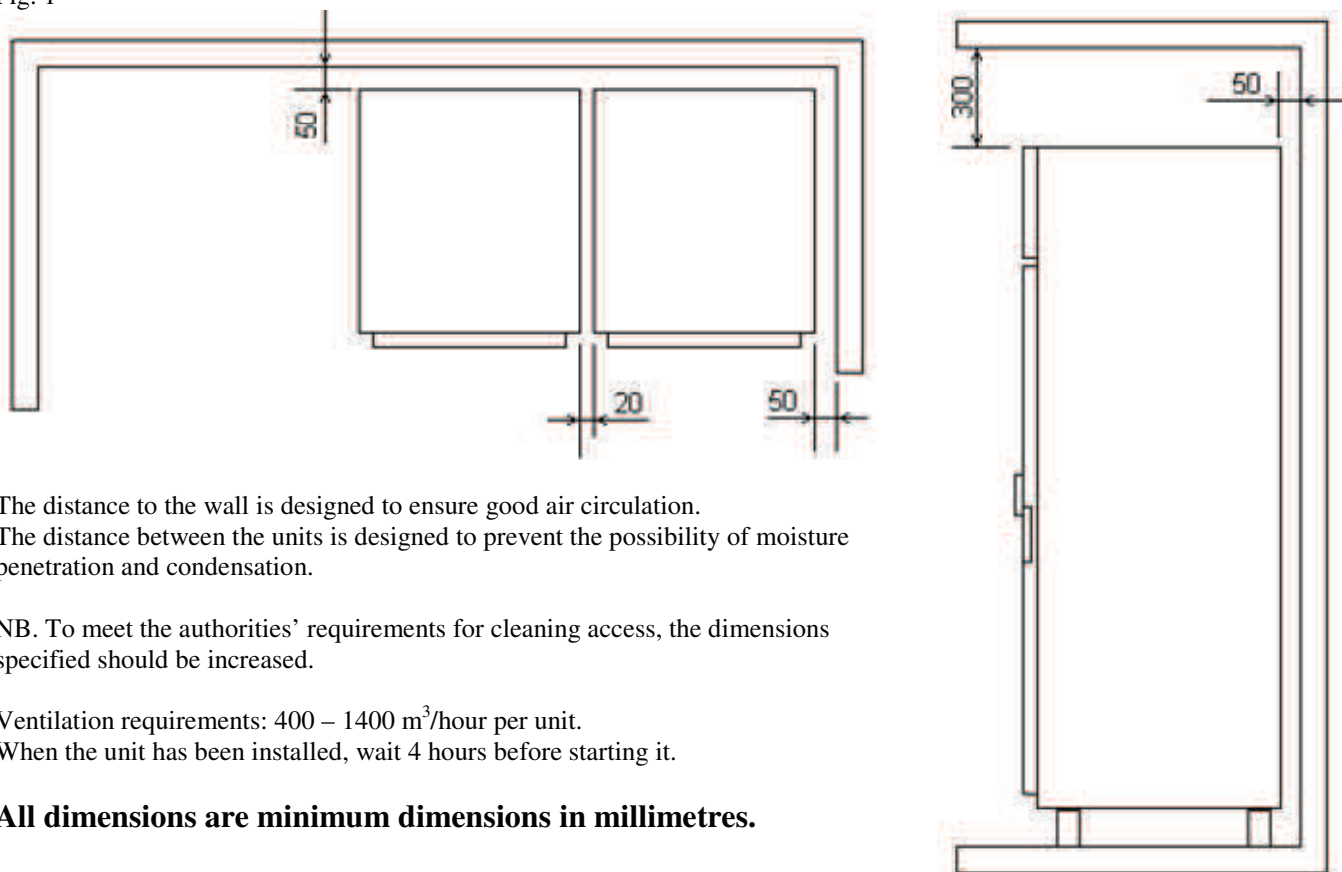
**Electrical connections must be made in accordance with all applicable local standards and regulations in force at the time.**

- The electrical connection must be made in accordance with all applicable standards and regulations.
  - The equipment works from single-phase 220-240 V AC 50 Hz
  - The equipment is connected simply by inserting the plug in the mains socket after checking that the mains socket can be loaded with the relevant current and has the correct protective earthing.
  - All standard version units are protected with a 10 A delay action fuse.
  - A 3 m power cable is supplied. This emerges from the unit or solenoid valve at a height above the floor of roughly 2000 mm.
- The electrical safety of the equipment can only be guaranteed when it has been correctly connected to an installation with protective earthing in accordance with applicable safety regulations.
- If you have any doubt about the efficiency of the protective earthing, the installation must be checked by a qualified engineer.

**The manufacturer accepts no liability for the consequences of the above safety measures not being taken.**

## Installation Instructions

Fig. 1



The distance to the wall is designed to ensure good air circulation.  
The distance between the units is designed to prevent the possibility of moisture penetration and condensation.

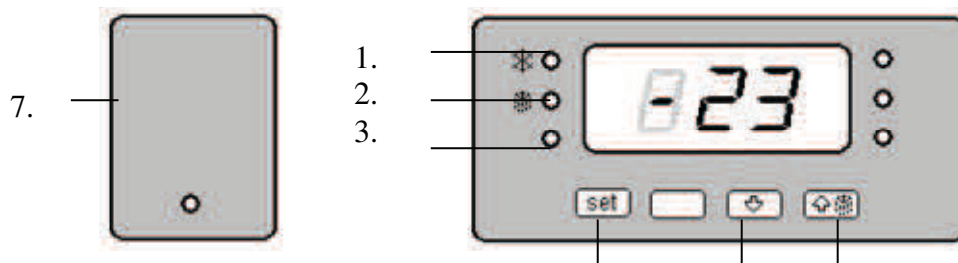
NB. To meet the authorities' requirements for cleaning access, the dimensions specified should be increased.

Ventilation requirements: 400 – 1400 m<sup>3</sup>/hour per unit.  
When the unit has been installed, wait 4 hours before starting it.

**All dimensions are minimum dimensions in millimetres.**

## Control Panel

Fig. 2



- |                       |                         |    |    |    |
|-----------------------|-------------------------|----|----|----|
| 1. Compressor working | 5. Reduce temperature   | 4. | 5. | 6. |
| 2. Defrosting         | 6. Increase temperature |    |    |    |
| 3. Fan                | 7. On/off switch        |    |    |    |
| 4. SET button         |                         |    |    |    |

## Cleaning

Fig. 3

