



Picture is showing a CK300
Refrigerator / Kühlschrank
CK214

Tel.: +49 40 600 094 680 E-Mail.: info@wesco-navy.de

Refrigerator CK214

Total capacity.....0,25 KW

=====

Marine Execution

Capacity : 0,25 kW

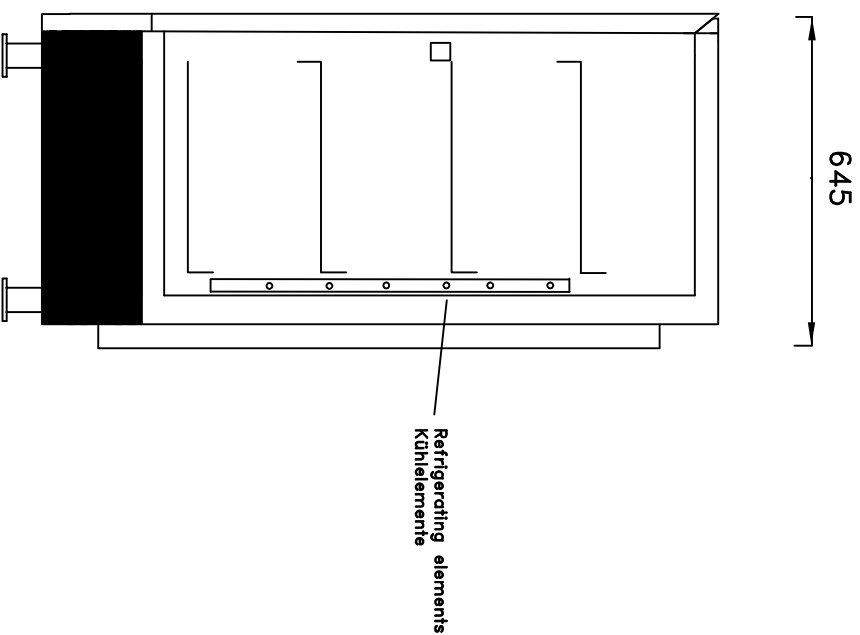
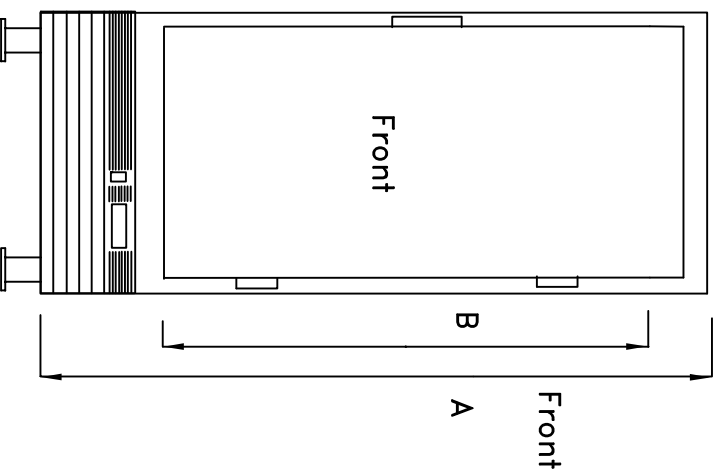
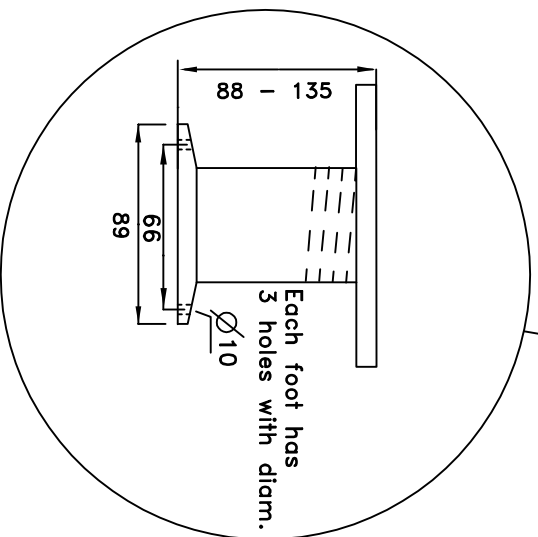
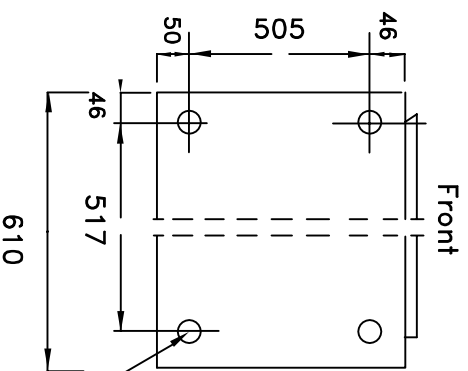
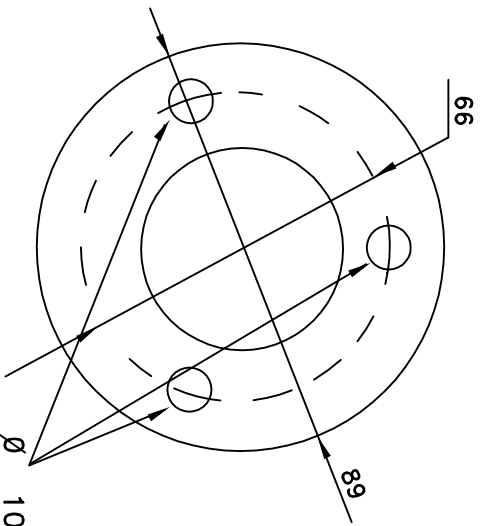
Refrigerant : R290

Temperature : -1 <-> +12°C

Door hinged : Right or left.

Please specify.

- Automatic defrosting.
- Without icecuber.
- Temp. indicator up front.
- Free standing for deck mounting.
- Front, door, sides, top of stainless steel.
- Feet for fastening to deck are adjustable in hight: 90-150mm.
- Operation under tropical conditions.
- Heavy marine hinges and lockable door.
- Complete and ready for use.
- Constructed for heavy use on ships.



PLOT OUT OF SCALE

Wir behalten uns vor, die technischen Spezifikationen im Interesse der Weiterentwicklung zu verändern.
We reserve the right to modify the specifications if necessary.

	A	B
CK 120	772	430
CK 214	1122	740
CK 267	1322	940
CK 300	1472	1090

ITEM:	23.01.06	AW
Refrigerator	Serie CK-	
Kühlschrank	120 – 300	
Tel.: +49 40 600 094 680 Fax.: +49 40 536 75 01		
E-mail.: info@wesco-navy.de		