



Picture is showing the system without gantry and lamp

Refrigerated counter / Kühltresen

CCP3GNGHL

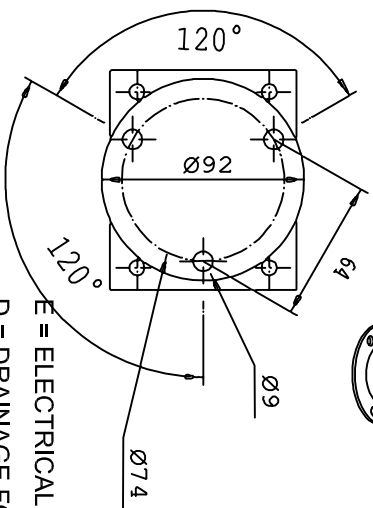
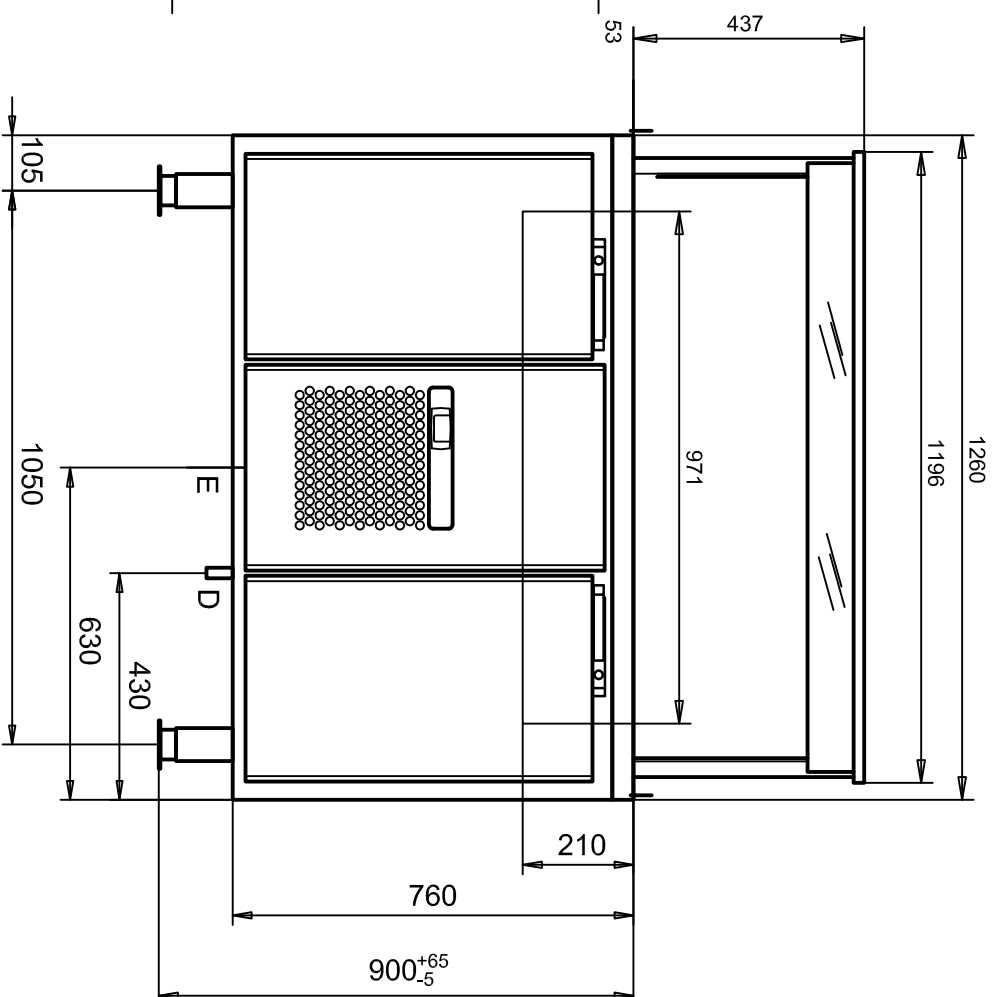
Tel.: +49 40 600 094 680 E-Mail.: [info@wesco-navy.de](mailto:info@wesco-navy.de)

## Cold counter CCP3GNGHL

-----  
Total capacity.....0,4 KW  
=====

### **Marine Execution**

- Coolbasin with space for 3 x GN 1/1.
- strong and reliable system.
- Easy to clean.
- Gastronorm size for drawers and cupboard.
- Fitted with automatic defrost and melt water evaporation.
- Made of stainless steel.
- Refrigerant : R404A
- 2 doors. The door has a lockable handle.  
Room is cooled +2°C-+12°C.
- Adjustable feet.
- **With sneeze guard and light**



~~E~~ = ELECTRICAL SUPPLY (VOLT)  
D = DRAINAGE FOR BAIN MARIE,

D = DRAINAGE FOR BAIN MARIE, 1/2" INSIDE THREAD OPTIONAL!!

**Wir behalten uns vor, die technischen Spezifikationen im Interesse der Weiterentwicklung zu verändern.  
We reserve the right to modify the specifications if necessary.**

### PLOT OUT OF SCALE

**ITEM:**

Refrigerated counter  
Kühltresen

THIS DRAWING REMAINS  
THE PROPERTY OF  
WESCO Navy

DRAW.	AW	02.03.14
-------	----	----------

REV.	-
------	---

---

**Tel.: +49 40 600 094 680 Fax.: +49 40 536 75 01**

E-mail.: [Info@wesco-navy.de](mailto:Info@wesco-navy.de)

WESCO Navy  
Hamburg