



Picture is showing unit without well and without sneezeguard.

Pls see drawing for correct impression.

Cold counter

CCP2GNGHL

Tel.: +49 40 600 094 680 E-Mail.: info@wesco-navy.de

Cold counter CCP2GNGHL

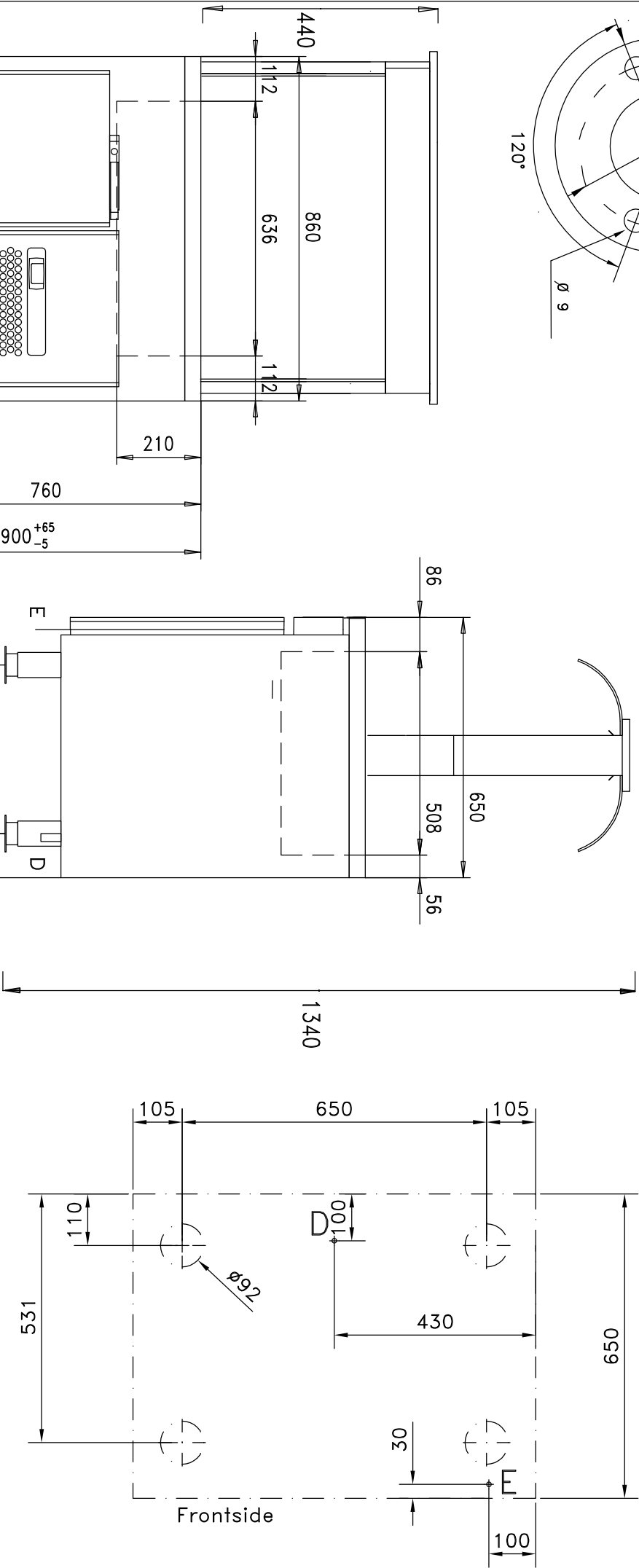
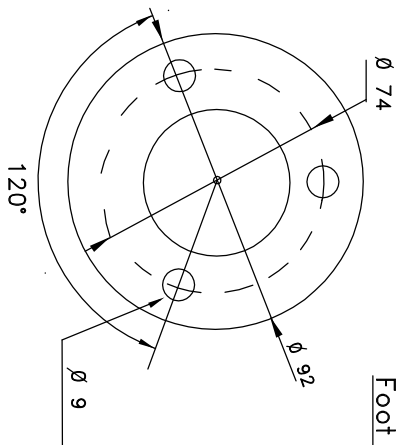
Total capacity.....0,4 KW
=====

Marine Execution

- Cool basin with space for 2 x GN 1/1.
- Strong and reliable system.
- Easy to clean.
- Gastronorm size for drawers and cupboard.
- Fitted with automatic defrost and melt water evaporation.
- Made of stainless steel.
- 1 door. The door has a lockable handle and strong hinges.
Room is cooled +2°C to +15°C.
- Adjustable feet of stainless steel.
- Digital temperature display.
- Recording max/min. temperature.
- Built in washable condenser air filter.
- With drain
- With sneeze guard & light

Foot detail E > Voltage 230 Vac (60 Hz)
cord 3 m, Schuko plug

D > Drain, outlet valve 1/2"



Wir behalten uns vor, die technischen Spezifikationen im
Interesse der Weiterentwicklung zu verändern.
We reserve the right to modify the specifications
if necessary.

ITEM:		Refrigerated counter		CCP2GNGHL		THIS DRAWING REMAINS THE PROPERTY OF WESCO Navy		DRAW.	AW	02.03.06
Kühltresen								REV.	-	-
Tel.: +49 40 600 094 680		Fax.: +49 40 536 75 01		WESCO Navy						
E-mail.: info@wesco-navy.de				Hamburg						