



Coffee- / Teamachine / Kaffee- / Teemaschine  
CB2x10W

Tel.: +49 40 600 094 680 E-Mail.: [info@wesco-navy.de](mailto:info@wesco-navy.de)

## Coffee- / Teamachine CB2x10W

Total capacity :.....9,2 kW

=====

### **Marine Execution**

Capacity Coffee/tea :60 L/h.

Hot water :22 L/h

Instant volume :20 Ltr.

Storage temp. :ca. 80-85°C.

**Electric conn. :1x 440/60/3. 8,4 KW**

**1x 220/60/1. 0,8 KW**

- Water inlet 3/4"
- Coffee machine with 2 containers  
each 10 ltrs., Construction of 18/9.
- Storm device for use on ships.
- Level gauge with non-drip cock.
- Preparation time of 10 Min./10 Ltr.
- complete and ready for use with:  
Containers fastened to base plate.  
Base plate with fastening bolts M8x60.
- CONSTRUCTION:

=====

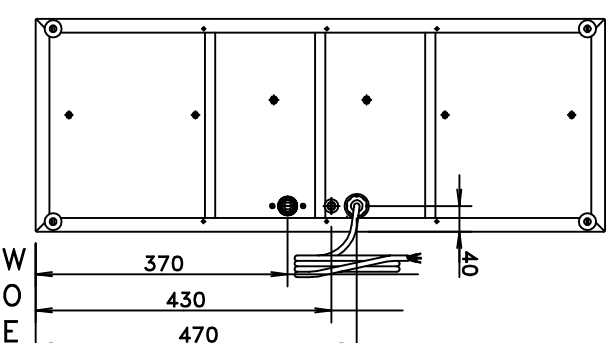
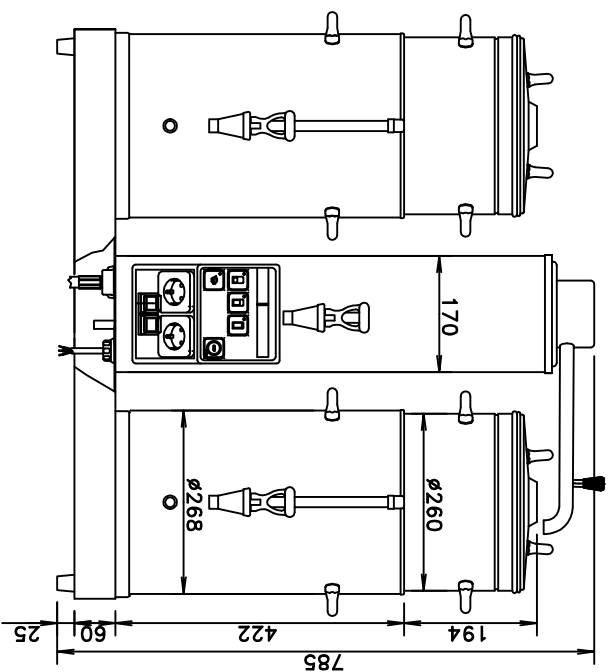
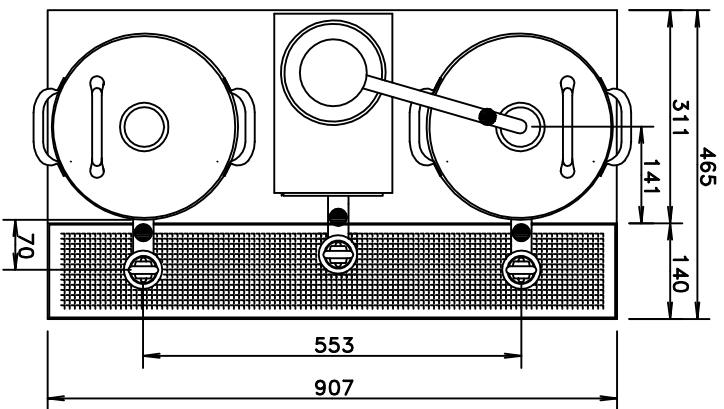
For the central coffee- and  
Tea supply, consisting of two flow  
through heaters in combination with  
two stainless steel containers.

- SERVICE MINDED:

=====

The machine is very easy to operate.  
The operation display gives admission  
to the control menus.

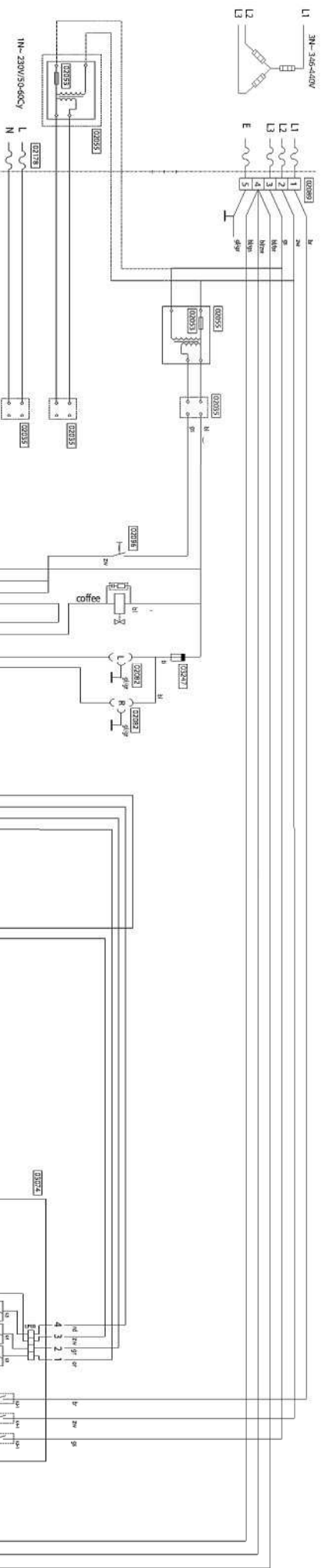
These menus are secured and only the  
operators can use them with a PIN number.



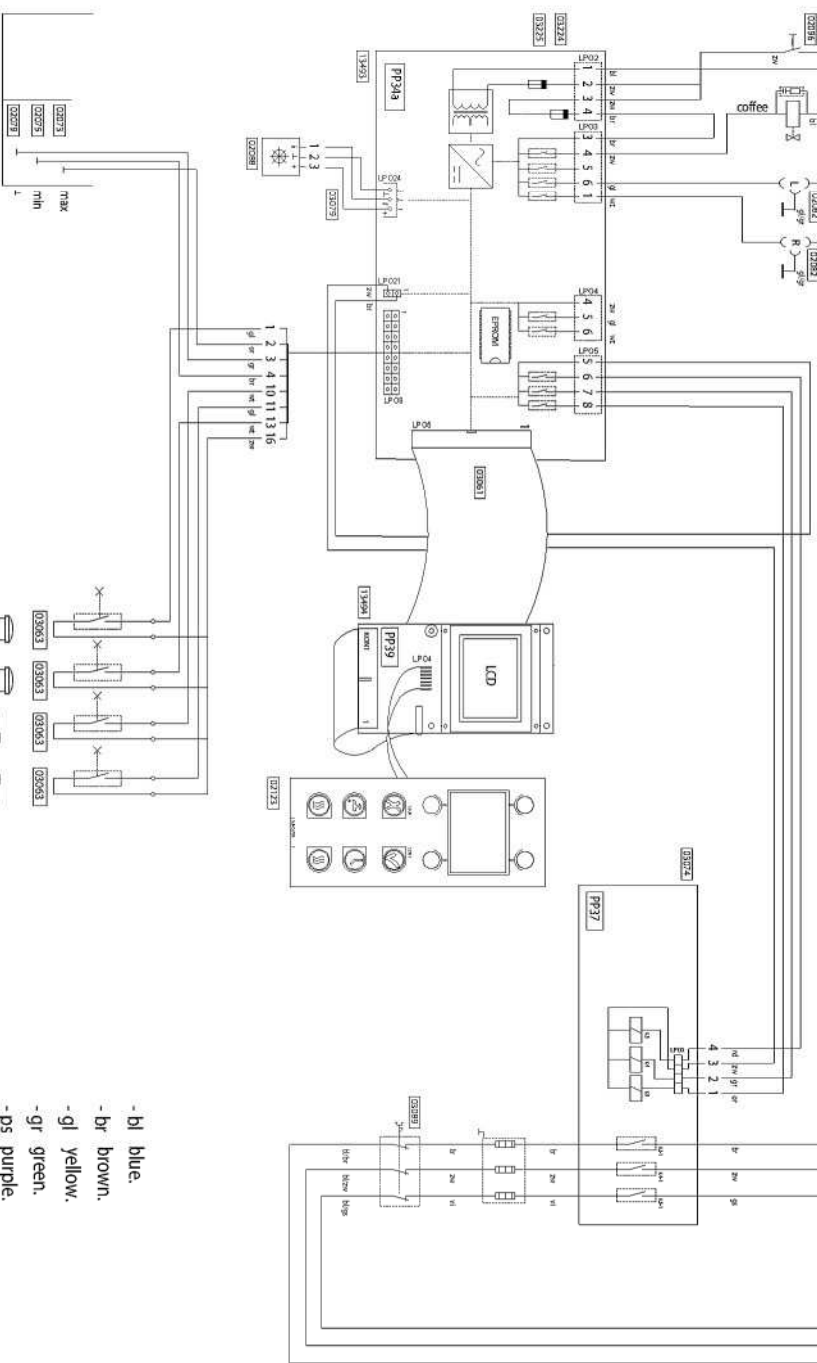
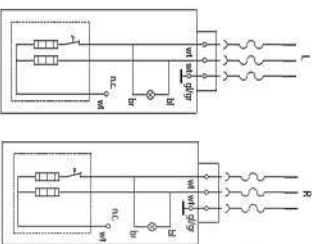
PLOT OUT OF SCALE

Wir behalten uns vor, die technischen Spezifikationen im Interesse der Weiterentwicklung zu verändern.  
We reserve the right to modify the specifications if necessary.

ITEM:		DRAW.	
Kaffeemaschine		KO	
Coffeemaker		REV.	
CB2x10W		13.05.08	
THIS DRAWING REMAINS THE PROPERTY OF WESCO Navy		WESCO Navy	
Tel.: +49 40 600 094 680 Fax.: +49 40 536 75 01		Hamburg	
E-mail.: <a href="mailto:Info@wesco-navy.de">Info@wesco-navy.de</a>			



1N~230V/50-60Cz



- bl blue.
- br brown.
- gl yellow.
- gr green.
- ps purple.
- gs gray.
- rd red.
- ts pink.
- wt white.

Type ☐ : CB 2x5 / 2x10 / 2x20 MARITIME

From mach. nr. ☐ : ☐ 10 0001  
Date ☐ : ☐ 01-05

Drawer ☐ MT  
Date ☐ : ☐ 03-04-2006

## Spare Parts Info