



Food waste disposer / Abfallzerkleinerer
1604S

Tel.: +49 40 600 094 680 E-Mail.: info@wesco-navy.de

Food waste disposer 1604S

Total capacity.....4,0 KW
=====

Marine Execution

FREE STANDING.

A single through unit is connected
at the end of a scrapping through

Capacity : 900 Kg/h

Motor : 4,0 KW

Running direct. : 2 ways

Water consume : 25 Liters/min.

Water control : Automatic solenoid valve
operation in conjunction
with motor.

Waste connect. : 54mm pipe.

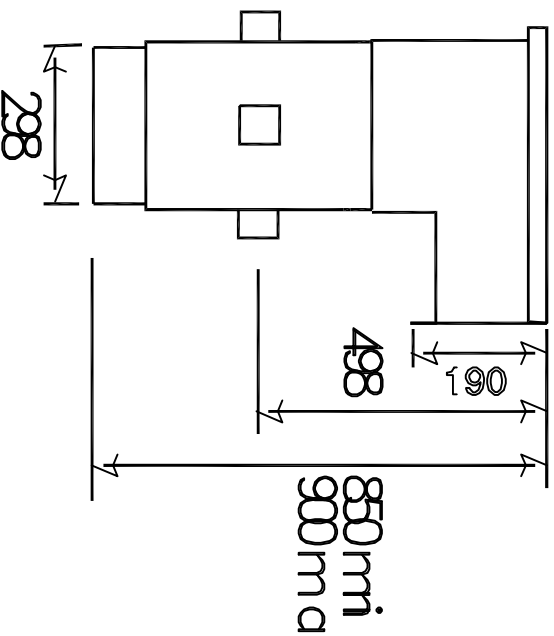
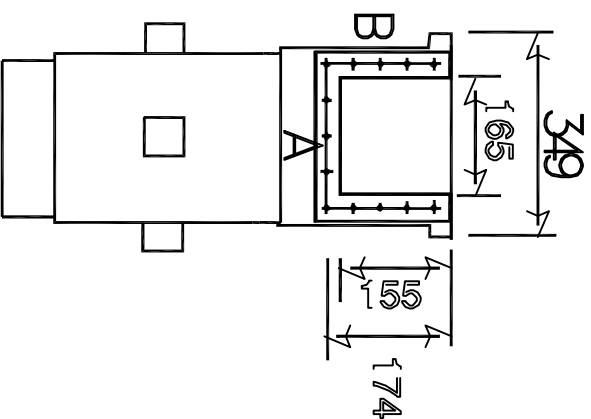
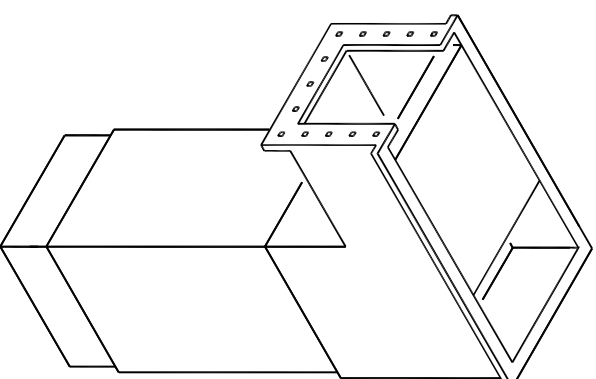
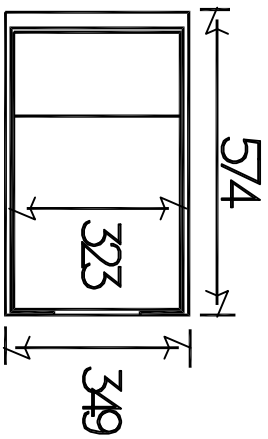
- Constructed for use on ships.
- Free standing model.
- Control box included.
- Built in motor protection.
- Smoothly running.
- Sufficient for 1800 covers/sitting.

IMPORTANT:

- The food waste disposer has a motor
of 4,0 KW. Thus this model has limits
for what it can do.

Heavy bones should be cut up before they
are put into the machine.

Control that ca. 25 l/m. of water are
flowing through the machine by operation.



PLOT OUT OF SCALE

| | | | | | |
|---|--|---|----|-------------|--|
| ITEM: | | | | | |
| Food waste disposer | | 1604 S | | | |
| Abfallzerkleinerer | | | | | |
| | | THIS DRAWING REMAINS THE PROPERTY OF WESCO Navy | | | |
| | | DRAW. | KO | 12.04.17 | |
| | | REV. | - | | |
| Tel.: +49 40 600 094 680 Fax.: +49 40 536 75 01 | | E-mail.: Info@wesco-navy.de | | DRAWING NO. | |

Wir behalten uns vor, die technischen Spezifikationen im Interesse der Weiterentwicklung zu verändern.
We reserve the right to modify the specifications if necessary.

WIRING DIAGRAM – 904 / 1204 / 1604 THREE PHASE

